

Lostwithiel Primary School

Newsletter AUTUMN TERM - 05.10.2018



Lostwithiel School
Bodmin Hill
Lostwithiel
Cornwall
PL22 0AJ

www.lostwithiel.cornwall.sch.uk
Telephone: 01208 872339

**PRIDE,
PASSION,
PARTNERSHIP,
PERSEVERANCE,
PARTICIPATION.**

Head's Hello

We have had another busy week in school. On Monday we had a Maths advisor from Devon working with us to find ways to encourage the children to use more fluency within their maths lessons. We are really looking forward to expanding this across the whole school to help all of our learners. Our Year 6 children have been to Fowey River Academy for the day to experience life at secondary school. Mrs Faircloth and Mr Stead were delighted to catch up with lots of our ex-pupils and see how they are all getting on.

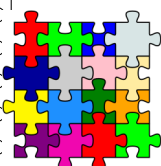
Our hard working school council are meeting today to discuss litter. We have been invited by the Mayor to join the #LitterlessCornwall campaign. The children will be taking part in a competition to design signs to promote the campaign. The Mayor will have the winning designs made into signs and put up around the town.

Next week is 'Artsmark' week; look out for the posters on classroom doors to see what is happening in your child's class.

I hope you all have a lovely weekend.

Kate Webber

Acting Head teacher



WANTED FOR AFTER SCHOOL CLUB—Do you have any jigsaw puzzles for age 7plus that perhaps your child has outgrown? We are looking for some for our after school club. Please bring any donations to the school office, thankyou.

THIS WEEK'S STAR LEARNERS

APPLE	Flynn, Isaac and Emmy
CHERRY	Elliott and Harper
OAK	George and Holly
WILLOW	The whole class for fantastic setting descriptions and continued perseverance when editing
BEECH	Freya and Noah
MAPLE	Ashton M, Freddie and Ashley D
CONKERS	Felix and Katie

And a special mention this week to our school council children for their behaviour and enthusiasm at the recycling centre



This week's attendance:

Apple:	95.65%
Cherry:	96.30%
Oak:	98.77%
Willow:	92.36%
Beech:	96.53%
Maple:	95.65%
Conkers:	95.88%

Last day of half term—**Friday 19th October 2018**—Half term: Monday 22nd to Friday 26th October

Return to school— **Monday 29th October 2018**

After School Club phone 07821 645720 3.15pm to 5.30pm



Lostwithiel School
Bodmin Hill
Lostwithiel
Cornwall
PL22 0AJ

www.lostwithiel.cornwall.sch.uk
Telephone: 01208 872339

**PRIDE,
PASSION,
PARTNERSHIP,
PERSEVERANCE,
PARTICIPATION.**

DATES FOR YOUR DIARY (Please check every week for new events being added)

OCTOBER 2018

w/c 8th	Artsmark Celebration week
Thursday 11th	School photographs– individual and sibling photographs.
Thursday 11th	Lostwithiel School Association AGM at 2pm.
Tuesday 16th	EYFS Open afternoon for 2019 intake, 2pm-3pm
Friday 19th	Family Friday Non school uniform day—fundraiser– details to follow Monday 22nd to Friday 26th HALF TERM
31st October	Last day to apply for a Year 7 secondary school place for a Year 6 child.

NOVEMBER 2018

Thursday 1st	Year 1 (Cherry Class) hearing screening.
Mon 5th-Fri 9th	Parent/carers evenings, meetings with class teacher/s—details to follow
Friday 16th	Children in need—wear your pyjamas to school day—details to follow
Friday 23rd	Nasal Flu Immunisation– Years R,1,2,3,4 and 5.

TEMPEST
PHOTOGRAPHY

SCHOOL PHOTOGRAPHS BY TEMPEST PHOTOGRAPHY

Tempest will be at school on **Thursday 11th October** to take individual and sibling photographs.
If you would like your child/children to have their photograph taken with their younger non-school sibling/s please go to the school hall at 8.30am no need to pre-book. Tempest will take these photographs from 8.30am to 9.00am.

LOST PROPERTY

Some items of named school uniform have been reported missing. Could you kindly check your child's school uniform items in case they have mistakenly brought home another child's uniform. Please label all items clearly with your child's name so that lost property items can be returned to their owners as soon as possible. We are planning to have a central point for lost property where parents can check for missing items. We will advise you when this has been set up. Thank you

ST AUSTELL FESTIVAL OF MUSIC & SPEECH

St John's Methodist Church

Wednesday 21st November to Saturday 24th
November

Monday 26th November to Saturday 1st December

PROGRAMME INFORMATION AVAILABLE FROM THE
SCHOOL OFFICE



Lostwithiel School
Bodmin Hill
Lostwithiel
Cornwall
PL22 0AJ

www.lostwithiel.cornwall.sch.uk
Telephone: 01208 872339

**PRIDE,
PASSION,
PARTNERSHIP,
PERSEVERANCE,
PARTICIPATION.**

NITS

REPORTING SICKNESS TO SCHOOL

School follow the guidance from the Health Protection Agency. Should your child be taken ill with either sickness or diarrhoea we recommend that they stay away from school for 48 hours after the last bout of sickness or diarrhoea, to limit the chance of passing it on.

As a safeguarding issue it is important that you report your child's absence to school. You can call the office (if you call outside school hours you can leave a message on the answerphone), email to admin@lostwithielsch.org, or use the class dojo system.

We are always looking for ways to help combat the spread of head lice in school and realise what a nuisance these creatures are!

As teachers we are just as vulnerable and spend hours combing our hair too.

May we recommend that shoulder length hair or longer is tied back and that you check your child's hair is checked regularly and treat as necessary.

Please see the link below for information about how to get a prescription comb :

<http://www.nittygritty.co.uk/site/howtogetaprescription.asp>

HEALTH CHECKS TO BE HELD AT LOSTWITHIEL SCHOOL DURING THIS TERM

There are several health checks due to take place this term. As consents are required for some of these checks we will also keep this information in the newsletter for the next few weeks for your reference. Please contact the school office if you have any questions.

RECEPTION AND YEAR 6

HEALTH CHECKS

DATE TO BE CONFIRMED

Booklets with a detachable form have been issued to children in Reception and Year 6. Parents only need to return their forms if they **do not** want their child to be weighed and measured. If a form is not returned consent will be assumed and your children will have the necessary checks. The form issued to Reception children also has a section regarding hearing checks when they are in Year 1. If you do not want your child to have a hearing check in Year 1 please tick the appropriate box as these forms will be retained and used for the Year 1 hearing check in the next academic year 2019/2020.

YEAR 1

HEARING CHECK

Thursday 1st November 2018

Children in Year 1 will be having hearing checks on Thursday 1st November 2018. Health check forms were issued to Year 1 children when they were in Reception class and these forms will be used to check for consent. If you did not return your form at that time consent will be assumed and your child will receive the hearing check. If you did not return your form and now do not want your child to have a hearing check please contact the school office.

RECEPTION, YEAR 1, YEAR 2, YEAR 3, YEAR 4, YEAR 5

Nasal Flu Vaccinations

Friday 23rd November

We have been advised that the Nasal Flu Vaccinations will take place on Friday 23rd November and will now be available to children in Years R,1,2,3,4,5. This year Kernow Health are introducing a digital consent (known as econsent) for parents. A copy of the letter from Kernow Health with the parent log on details is attached to this newsletter. You will be unable to click on the link as mentioned in the letter, however just type the web information into your browser bar. If you do not have online access please advise the school office.



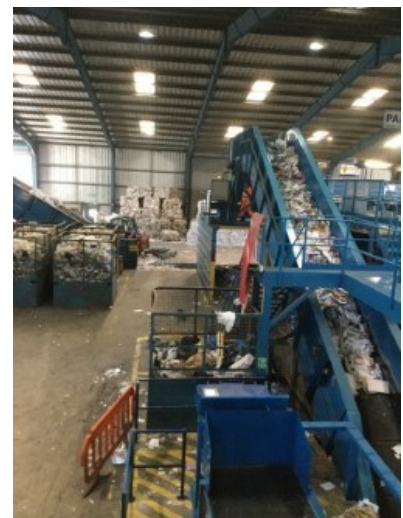
Lostwithiel School
Bodmin Hill
Lostwithiel
Cornwall
PL22 0AJ

www.lostwithiel.cornwall.sch.uk
Telephone: 01208 872339

**PRIDE,
PASSION,
PARTNERSHIP,
PERSEVERANCE,
PARTICIPATION.**

SCHOOL COUNCIL visit the recycling centre

Following on from achieving the Bronze Eco-School Award, the School Council visited The Materials Recycling Facility in Bodmin. During the visit the children had the opportunity to tour the facility to see the day to day tasks such as sorting the items by hand and removing items like black plastic and juice cartons. After the tour the children did some scrap modelling and took part in a recycling game, where they raced to place items in the correct boxes (did you know you can recycle textiles in your glass recycling box?) It was a very informative day for both the children and adults attending, and our School Council children were armed with curiosity and enthusiasm.





Lostwithiel School
Bodmin Hill
Lostwithiel
Cornwall
PL22 0AJ

www.lostwithiel.cornwall.sch.uk
Telephone: 01208 872339

**PRIDE,
PASSION,
PARTNERSHIP,
PERSEVERANCE,
PARTICIPATION.**



SUNDAY OCTOBER 7TH PETS SERVICE

Followed by refreshments
and pet snacks!



© Can Stock Photo - csp19456944

All pets welcome

Dogs on leads

**Pets in cages are
fine**

Toy pets welcome

STARTS AT 11.00AM

**St Bartholomew's
Church**

**CHURCH LANE
Lostwithiel**



BADGER FOREST SCHOOL

& OUTDOOR LEARNING

Autumn Fun Day Wheal Martyn



**Forest School fun activity sessions for all
the Family in Wheal Martyn woods**

On Friday 26th October from 11.00-1.00pm

Take part in a range of exciting outdoor activities:

- Autumn crafts and masks
- Campfire cooking
- Trails and nature hunts
- Shelter building
- Storytelling
- Team games

Drinks and snacks are provided. Museum Entry is included with the one-off payment.

The base camp area is buggy friendly and shelter is available.

**To book please go to www.badgerforestschoool.co.uk/booking-form
or pay on the day at Wheal Martyn (if spaces are available)**

£8 child
£4 adult
Includes museum



www.badgerforestschoool.co.uk
www.wheal-martyn.com
info@wheal-martyn.com



Wheal Martyn
Badger Forest School



@whealmartyn
@badgerforest





Lostwithiel School
Bodmin Hill
Lostwithiel
Cornwall
PL22 0AJ

www.lostwithiel.cornwall.sch.uk
Telephone: 01208 872339

**PRIDE,
PASSION,
PARTNERSHIP,
PERSEVERANCE,
PARTICIPATION.**

FUN PALACES

FUN & GAMES

BADGER FOREST SCHOOL
THE BEACON NATURE RESERVE

CORNWALL'S
REGIMENTAL
MUSEUM

THE OLD
LIBRARY

SUSTRANS
THE BEACON ACE ACADEMY

ST. PETROC'S CHURCH

SEARCH FOR
FUN PALACES BODMIN
ON FACEBOOK FOR
MORE INFO!

BODMIN & WENFORD
RAILWAY

SHARE THE
FUN WITH
#FunPalacesBodmin

FREE EVENTS ALL OVER BODMIN

SATURDAY 6TH & SUNDAY 7TH OCTOBER



Lostwithiel School
Bodmin Hill
Lostwithiel
Cornwall
PL22 0AJ

www.lostwithiel.cornwall.sch.uk
Telephone: 01208 872339

**PRIDE,
PASSION,
PARTNERSHIP,
PERSEVERANCE,
PARTICIPATION.**

CORNWALL COUNTY CHOIRS



MINI SINGERS

Aged 3—8? Love singing?

Mini Singers is Cornwall's County Choir for children aged 3 - 8.

Expect games, activities, movement and actions, funny songs and made-up songs. No auditions, just bring a smile!

Sessions, led by Lindsay Eddy and Alice Browning held once every month at Truro High School for Girls. Mini singer sessions are free and there are no auditions. Places are limited and must be pre-booked and your child must be accompanied by an adult for the duration of the session.

This year's first session is on **Saturday 6th October 3pm—3.45pm**
(please arrive from 2.45pm onwards)

Cornwall Mini Singers is part of The Cornwall County Choirs family,
Supported by the Cornwall Music Education Hub

Contact Lindsay Eddy to find out more and to book.

Email: leddyccc@gmail.com or alternatively call 01872 327351

**Cornwall Music
Education Hub**

Supported using public funding by



**ARTS COUNCIL
ENGLAND**





Lostwithiel School
Bodmin Hill
Lostwithiel
Cornwall
PL22 0AJ

www.lostwithiel.cornwall.sch.uk
Telephone: 01208 872339

**PRIDE,
PASSION,
PARTNERSHIP,
PERSEVERANCE,
PARTICIPATION.**



Kernow Health

Schools Immunisation Team

Protecting Cornwall's Children and Young People

Kernow Health CIC

School Immunisation Programme

1st Floor, Cudmore House

Oak Lane

Truro

Cornwall

TR1 3LP

Main Office Tel: 01872 221105/ 221106/ 221107

Email: Kernowhealth.schoolimmunisation@nhs.net

Website: www.kernowhealthcic.org.uk

11 September 2018

Dear Parent/Guardian

Your child's annual nasal flu vaccination is now due

Kernow Health is delivering the flu immunisation programme in Cornwall's schools on behalf of NHS England. Flu can be an unpleasant illness and sometimes causes serious complications. Vaccinating your child will also help protect more vulnerable friends and family by preventing the spread of flu.

In 2018/19 all children in **Reception and school years 1, 2, 3, 4 and 5** will be offered the vaccine.

The vaccination is free and recommended for young children; it is administered by a quick and simple spray up the nose. Please click on the following [link](#) to access information explaining the vaccination programme which also includes details about the small number of children for whom the nasal vaccine is not appropriate.

Please click on the following link to access the consent form: www.kernowimmunisations.co.uk/flu

PLEASE ENSURE YOU QUOTE THE FULL UNIQUE SCHOOL REFERENCE CODE. The code for your school is:

LOSTWITHIEL SCHOOL

EE142241

Please return your consent form as soon as possible. The form will not be available 2 days before we visit your child's school, but your child can still be immunised at one of our catch-up clinics. We are in the process of arranging dates with schools and once confirmed these will be on our website.

If your child becomes wheezy or has their asthma medication increased after you return this form, please contact Kernow Health on one of the numbers above.

If you decide you do not want to vaccinate your child against flu, please complete and return the consent form giving the reason. This will help us to plan and improve the service. Please tell us if you need this information in a different format.

Yours faithfully

Dr Terese Tubman
Clinical Lead School Immunisation Service

Chair: Dr Jonathan Katz

Chief Executive: Carolyn Andrews

Kernow Health CIC | Company Number: 07551978 | Registered Office: 1st Floor, Cudmore House, Oak Lane, Truro, Cornwall, TR1 3LP



Lostwithiel School
Bodmin Hill
Lostwithiel
Cornwall
PL22 0AJ

www.lostwithiel.cornwall.sch.uk
Telephone: 01208 872339

**PRIDE,
PASSION,
PARTNERSHIP,
PERSEVERANCE,
PARTICIPATION.**



Public Health
England



flu

5 reasons to vaccinate your child

- ✓ 1. **Protect your child.** The vaccine will help protect your child against flu and serious complications such as bronchitis and pneumonia
- ✓ 2. **Protect you, your family and friends.** Vaccinating your child will help protect more vulnerable family and friends
- ✓ 3. **No injection needed.** The nasal spray is painless and easy to have
- ✓ 4. **It's safer than flu.** The nasal spray helps protect against flu, has been given to millions of children worldwide and has an excellent safety record
- ✓ 5. **Avoid costs.** If your child gets flu, you may have to take time off work or arrange alternative childcare

What should I do?

Contact your GP if your child is aged two or three years old and you haven't heard from their GP by early November.

If your child is at primary school and is eligible, the school will send you a consent form. Please sign and return it.

If your child has a health condition that puts them at greater risk from flu, they are also eligible for the flu vaccine.

For more information visit
www.nhs.uk/child-flu

**STAY WELL
THIS WINTER**

Flu **i**mmunisation

Helping to protect everyone,
every winter



Lostwithiel School
Bodmin Hill
Lostwithiel
Cornwall
PL22 0AJ

www.lostwithiel.cornwall.sch.uk
Telephone: 01208 872339

**PRIDE,
PASSION,
PARTNERSHIP,
PERSEVERANCE,
PARTICIPATION.**



The
deadline for
applications
is 31 October
2018

Transfer to secondary school September 2019

Applying for a place in year seven at a secondary school

Information and guidance

Website and application form: www.cornwall.gov.uk/admissions

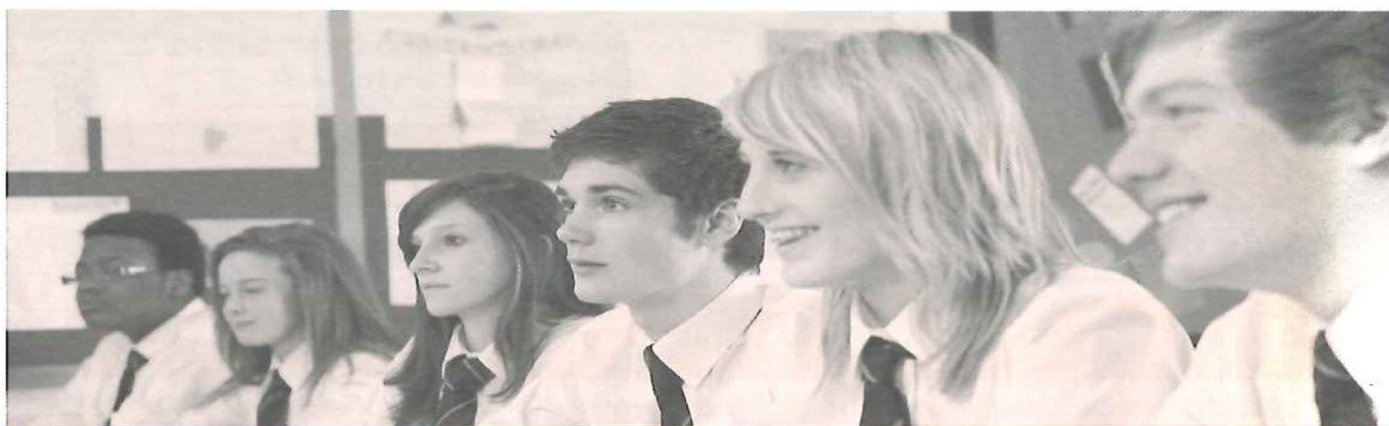
Email: schooladmissions@cornwall.gov.uk

Post: **School Admissions Team, County Hall, Truro, TR1 3AY**

Telephone: **0300 1234 101**

Need help with your application?

Contact the Family Information Service on **0800 587 8191**



www.cornwall.gov.uk





Lostwithiel School
Bodmin Hill
Lostwithiel
Cornwall
PL22 0AJ

www.lostwithiel.cornwall.sch.uk
Telephone: 01208 872339

**PRIDE,
PASSION,
PARTNERSHIP,
PERSEVERANCE,
PARTICIPATION.**

Applying for a secondary school place for September 2019

Special Educational Needs

If an Education, Health and Care (EHC) Plan has been issued for your child you do not need to complete an application form. Please contact the Statutory SEN Service for more information: Tel: **01872 324242** Email: **statutorysen@cornwall.gov.uk**

1 Decide on your preferred schools

You are strongly advised to name **three** preferences on the application form. **Naming a second or third preference does not give you any less chance of getting a place at your preferred school.** When making your decision you should...

...think about **how you will get your child to school.** Go to **www.cornwall.gov.uk/schooltransport** for more information on whether your child would be entitled to transport to school.

...look at the **admission arrangements** on our website that will be used to allocate places for each school.

...consider naming your **nearest or designated school** as one of your preferences. You can find your nearest or designated school on our website.

...look at the detailed **admissions information** on our website, also available on request.

2 Submit your application by 31 October 2018

Apply online at **www.cornwall.gov.uk/admissions**

3 Wait to find out which school you have been allocated

If you applied on time you will be notified of your allocation on **National Offer Day: 1 March 2019. Apply on time!** Late applications will only be dealt with after National Offer Day and there may not be any places left at your preferred schools.



Lostwithiel School
Bodmin Hill
Lostwithiel
Cornwall
PL22 0AJ

www.lostwithiel.cornwall.sch.uk
Telephone: 01208 872339

**PRIDE,
PASSION,
PARTNERSHIP,
PERSEVERANCE,
PARTICIPATION.**



**CORNWALL
COUNCIL**
one and all • onen hag oll

The
deadline for
applications is
15 January
2019

Starting school September 2019

Applying for a place in a reception class for children born between 1 September 2014 and 31 August 2015

Attending a nursery

Please note that attending a school's nursery does not guarantee your child a place at that school – you still need to apply. The criteria in the school's admission arrangements will be used to allocate places. Visit our website or contact us for more information.

Information and guidance

Website and application form: www.cornwall.gov.uk/admissions

Email: schooladmissions@cornwall.gov.uk

Post: **School Admissions Team, County Hall, Truro, TR1 3AY**

Telephone: **0300 1234 101**

Need help with your application?

Contact the Family Information Service on **0800 587 8191**



www.cornwall.gov.uk





Lostwithiel School
Bodmin Hill
Lostwithiel
Cornwall
PL22 0AJ

www.lostwithiel.cornwall.sch.uk
Telephone: 01208 872339

**PRIDE,
PASSION,
PARTNERSHIP,
PERSEVERANCE,
PARTICIPATION.**

Applying for a reception class place for September 2019

Special Educational Needs

If an Education, Health and Care (EHC) Plan has been issued for your child you do not need to complete an application form. Please contact the Statutory SEN Service for more information: Tel: **01872 324242** Email: statutorysen@cornwall.gov.uk

1 Decide on your preferred schools

You are strongly advised to name **three** preferences on the application form. **Naming a second or third preference does not give you any less chance of getting a place at your preferred school.** When making your decision you should...

...think about **how you will get your child to school.** Go to www.cornwall.gov.uk/schooltransport for more information on whether your child would be entitled to transport to school.

...look at the **admission arrangements** on our website that will be used to allocate places for each school.

...consider naming your **nearest or designated school** as one of your preferences. You can find your nearest or designated school on our website.

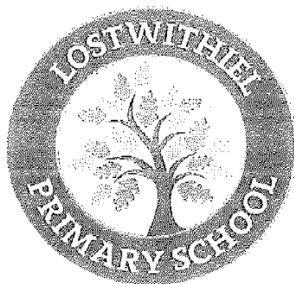
...look at the detailed **admissions information** on our website, also available on request.

2 Submit your application by 15 January 2019

Apply online at www.cornwall.gov.uk/admissions

3 Wait to find out which school you have been allocated

If you applied on time you will be notified of your allocation on **National Offer Day: 16 April 2019. Apply on time!** Late applications will only be dealt with after National Offer Day and there may not be any places left at your preferred schools.



Lostwithiel School
Bodmin Hill
Lostwithiel
Cornwall
PL23 0AJ

www.lostwithiel.cornwall.sch.uk
Telephone: 01208 872339

PRIDE
PASSION
PARTNERSHIP
PERSEVERANCE
PARTICIPATION

9 February 2018

Dear Parents and Carers,

I am writing to you to update you on the following attendance procedures we have put in place after agreeing a new attendance policy with the local governing body. Although we know that most families work really hard to ensure their children are at school every day, on time, average attendance at Lostwithiel Primary School is below the national average for England. Our school attendance target this year is 96.5%. We have now created a policy and system for when children's attendance falls below 95%. We are sharing this with you so that we can ensure the challenging of non-attendance is fair and consistent. Most children have excellent attendance and we want to thank all those families who make every effort to support this.

Lostwithiel School will now be referring unauthorised holidays of 10 sessions (5 school days) or more to Cornwall Council Education Welfare Service. This will be common practice from Easter 2018. This decision has been strongly recommended by the Regional Schools Commission, who visited our school in September and identified absence, particularly term time holidays, as an issue that is negatively affecting the outcomes of pupil at our school. This has been considered carefully by the school governors, senior leaders and the Peninsula Learning Trust.

The Department of Education no longer allows headteachers to grant any leave of absence during term time unless there are exceptional circumstances. If you consider that your request for absence is exceptional you will need to complete the request from the school office. Letters and emails requesting holiday will not be accepted. A response will be sent to you as soon as possible.

If leave is not authorised and you nevertheless withdraw your child from school, the absence will be recorded as unauthorised absence and you will be committing an offence under the Education Act 1996. We will then refer the matter to Cornwall Council who may decide to take legal action against you. The Penalty Notice Officer will consider requests when attendance is or would fall to below 94.5%. They will look at your child's current attendance and their attendance of the previous academic year. You can find further details on this on our website.

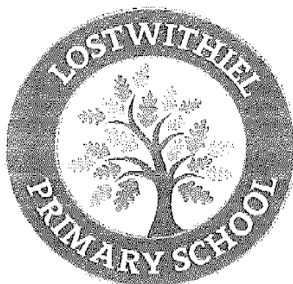
A Penalty Notice can be issued under Section 444A and 444B of the Education Act 1996. This carries a fine of £60 if paid within 21 days or £120 if paid after this but within 28 days. Failure to pay the Penalty Notice may result in Court action. Persistent absences not authorised by the school may result in a prosecution in the Magistrates Court, leading to fines up to £2,500 and/or custodial sentences. Please note that a Penalty is issued to each parent for each child taken out of school. Cases of ongoing and entrenched cases of poor attendance are dealt with separately by the school and EWS. Processes for this can be found on our website.

Celebrating Good Attendance:

We listened to feedback from parents and pupils last term and will be changing the way we celebrate good attendance. Instead of weekly class awards which caused concern for some children and families, we will be introducing a whole school half termly target of 96.5%. If the whole school reach this target, *all* pupils will celebrate together at the end of the term with a special celebration disco. We will still publish class attendance weekly in the newsletter to raise awareness of class attendance.

Headteacher: Natalie Simmonds

Lostwithiel School is part of the Peninsula Learning Trust, a company limited by guarantee. Registered in England and Wales at Unit 18, St Austell Business Park, Treverbyn Road, Carclaze, St Austell, Cornwall, PL25 4FD. Company number 07565242. An exempt charity.



Lostwithiel School
Bodmin Hill
Lostwithiel
Cornwall
PL22 0AJ

www.lostwithiel.cornwall.sch.uk
Telephone: 01208 872339

**PRIDE,
PASSION,
PARTNERSHIP,
PERSEVERANCE,
PARTICIPATION.**

Absence Reports and Requests

If you know your child is going to be absent from school you should contact the office and leave a message. If a child is absent without a reason, we will ring their named contacts to establish the reason for absence.

Following Department for Education guidance, we ask that all medical appointments be made outside of school hours. If this is not possible, please make sure the office have a copy of the appointment letter for your child's file. We will expect your child to be at school before and after the appointment (e.g. for an 11am appointment, we would expect your child to be collected at 10:30 and then returned to school for afternoon lessons).

Formal Steps to Challenge Non-Attendance

When attendance is not good enough we will meet with parents to discuss how it can be improved. If attendance still doesn't improve, we will take steps to challenge this, which ultimately may include prosecution, issued by Cornwall Council.

Attendance drops below 95%	Letter A sent home Phone call and/or meeting with school to establish causes of absence and how we can support this
Attendance drops below 93%	Letter B sent home No further absence for illness will be authorised, without a doctor's letter. Meeting with class teacher and headteacher to establish an improving attendance plan
Attendance drops below 90%	Child is classed as persistently absent, which we must report to the local authority. Meeting with head teacher and local authority for an education planning meeting. 100 day monitoring period- if attendance improves we will continue to monitor, if your child misses 10% of sessions during this period we will begin proceedings with EWS to prosecute

No-one wants to fine or prosecute parents (to be clear, any funds raised from this do not come back to the school so there is no financial incentive for schools to take this route) but we know that children need to be at school to achieve well. I hope never to need to take this action at Lostwithiel Primary School. Please come and talk to us if there are reasons why your child is not attending school regularly. It is much better to work with us early on, so that children do not become persistently absent.

Our Attendance policy, copies of our letters and information about penalty notices from county are available on our website attendance page.

http://www.lostwithiel.cornwall.sch.uk/website/attendance_information_/333894

Yours Sincerely

Natalie Simmonds

Headteacher: Natalie Simmonds

Lostwithiel School is part of the Peninsula Learning Trust, a company limited by guarantee. Registered in England and Wales at Unit 18, St Austell Business Park, Treverbyn Road, Carclaze, St Austell, Cornwall, PL25 4FD. Company number 07565242. An exempt charity.



Lostwithiel School
Bodmin Hill
Lostwithiel
Cornwall
PL22 0AJ

www.lostwithiel.cornwall.sch.uk
Telephone: 01208 872339

**PRIDE,
PASSION,
PARTNERSHIP,
PERSEVERANCE,
PARTICIPATION.**

LOSTWITHIEL SCHOOL UNIFORM

April 2018

Dear parent/carers

As you may know we have changed our school logo from the bridge logo to the tree logo you see on this letter. As a school that is trying hard to sustain our numbers, it is important that parents from Lostwithiel and outside the community can see that our school has an outdoor learning ethos, is a forest school that is underpinned by our 5 P values. We often found visitors or potential parents would know nothing about our outdoor areas or forest school. We hope that this logo shows what we offer more clearly. To reinforce this message further, we will be changing our uniform to a forest green colour. The new uniform will have the new logo.

The new dark green uniform will take effect from September 2018 however we would like to stress that there will be a transition period and that we do not expect parents/carers to purchase the new uniform unless they are intending to buy new items anyway. The existing red uniform that you currently own can still be worn until items need to be replaced. The school office have an item of clothing in the new colour should you wish to look at it.

Wovina will continue to sell the Lostwithiel School uniform items and the new green uniform will be available to purchase after the 21st May 2018. The uniform will not be stocked in their shop for general sale so all items will need to be pre-ordered. Items can be posted (for a purchase of under £20 please allow £2.50 for postage and packing) or you can call at Wovina to collect the items personally (please allow up to 14 days for items to be ordered). For those parents who do not have internet access Wovina will accept telephone orders.

Wovina, 1-3 Omaha Road, Bodmin, PL31 1ER, Tel: 01208 833070, www.wovina.com.

The current Wovina prices for items showing the Lostwithiel School logo are:

**Full zip fleece: £13.00, Sweatshirt: £8.60, Cardigan (sweatshirt material) £11.45, PE T shirt: £4.10,
PE Bag: £3.85, Book Bag: £4.50.**

We would like to reiterate our school uniform policy:

Shoes

Plain black sensible shoes (no logo) – **No** canvas shoes, training shoes, boots, open toed or backless shoes.

Sock/Tights

black tights, white or black socks

Uniform

Black skirt or trousers (no jeans/leggings/jeggings)

Dark green polo shirt or white shirt/blouse (no white polo shirts)

Dark green jumpers/cardigans

Items with Lostwithiel school logo: dark green fleece, dark green sweatshirt, dark green cardigan (sweatshirt material)

In warmer weather : dark green and white check summer dress, black tailored shorts

PE

Black shorts or black track suit bottoms, black PE skirt or black skirt

Training shoes

Items with Lostwithiel School logo: dark green PE T shirt

Thank you for your continued support with our policies.



Lostwithiel School
Bodmin Hill
Lostwithiel
Cornwall
PL22 0AJ

www.lostwithiel.cornwall.sch.uk
Telephone: 01208 872339

**PRIDE,
PASSION,
PARTNERSHIP,
PERSEVERANCE,
PARTICIPATION.**

LOSTWITHIEL SCHOOL TRAVEL AND SAFETY

29th January 2018

Dear Parents and Carers,

Governors and school staff are very concerned about the safety and congestion on Bodmin Hill and around the school car park at drop off and pick up times.

We have taken the following actions to try and improve the safety and organisation of these very busy times of the day.

- Staff members will no longer park on the left side of the car park. This area will be kept free to allow drivers with a disabled badge easy access to the spaces provided. It will also allow turning room for the taxis that provide transport from the county council.
- A member of staff will do a car park duty from 8:45 am to 9 am. This will be to ensure safe drop off in and around the car park.

Staff members, disabled badge holders, taxis and child care providers will be allowed access to the car park.

We politely ask all other parents and carers:

- Do not enter the carpark to 'drop off' or park your car. Please park away from the school car park and gate to ease congestion
- Do not park or stop on the yellow zig zags outside the school entrance. This is illegal and is dangerous as it blocks the entrance and line of sight for pedestrians and other drivers
- Drive slowly and considerately on Bodmin Hill for the safety of pedestrians and children.

Natalie Simmonds
Head Teacher



Lostwithiel School
Bodmin Hill
Lostwithiel
Cornwall
PL22 0AJ

www.lostwithiel.cornwall.sch.uk
Telephone: 01208 872339

**PRIDE,
PASSION,
PARTNERSHIP,
PERSEVERANCE,
PARTICIPATION.**

CATERLINK MENU AUTUMN TERM 2018

<div> <p>ALLERGY INFORMATION: If your child has an allergy or intolerance, please ask a member of the catering team for information. If your child has a school lunch and has a food allergy or intolerance, you will be asked to complete a form to ensure we have the necessary information to cater for your child.</p> <p>Gold Menu Autumn 2018</p> <p>caterlink feeding the imagination</p> </div>						
		Monday	Tuesday	Wednesday	Thursday	Friday
Week 1						
	Main	Sausage Pasta Bake With Garlic Bread	Chicken Stir Fry with Noodles	Roast (as advertised) with Roast Potatoes and Gravy	Spaghetti Beef Bolognese (Made with organic mince)	MSC Salmon Fillets Fishfingers with Chips
03-Sep						
24-Sep	Vegetarian	Vegetarian Risotto	Mac and Cheese with Garlic Bread	Quorn Roast with Roast Potatoes and Gravy	Sweet & Sour Vegetables with Noodles	Vegetable wraps with Rice or Chips
15-Oct		CHEESE & BEANS	CHEESE	TUNA MAYO	CHEESE ONION & MAYO	BEANS
12-Nov		Baked Tomatoes	Peppers	Swede Mash and Carrots	Sweet corn	Baked Beans
03-Dec		Peas	Green Beans		Broccoli	Garden Peas
	Dessert	Apple Crumble & Custard Yoghurt	Yoghurt	Carrot and Courgette Cake & Custard Yoghurt	Apple & Raisin Strudel with Custard Yoghurt	Chocolate Cocoa Cookie Yoghurt and Fruit Station
		Fresh Fruit Platter	Fresh Fruit Salad	Fresh Fruit Platter	Fresh Fruit Salad	
Week 2						
	Main	Beef Meatballs in Tomato Sauce with Rice	Chicken and Broccoli Pasta Bake	Roast Turkey with Roast Potatoes and Gravy	Chicken Curry With Rice	MSC Battered Fish with Chips
10-Sep						
01-Oct	Vegetarian	Vegetarian Lasagne Jacket Wedges	Vegetarian Bolognese with Spaghetti	Mixed Vegetable Loaf with Roast Potatoes and Gravy	Mac and Cheese with Garlic Bread	Cheese & Tomato Quiche with Chips
22-Oct		TUNA MAYO	CHEESE	CHEESE ONION & MAYO	CHEESE AND BEANS	BEANS
19-Nov		Coleslaw	Peas	Broccoli	Sweet corn	Baked Beans
10-Dec		Sweet corn	Carrots	Cauliflower	Roasted Mixed Vegetables	Garden Peas
	Dessert	Eves Pudding with Custard Yoghurt	Pineapple Loaf Yoghurt	Chocolate & Banana Oaty Square Yoghurt	Oaty Peach Crumble with Custard Yoghurt	Vanilla shortbread biscuit Yoghurt and Fruit Station
		Fresh Fruit Platter	Fresh Fruit Chunks	Fresh Fruit Salad	Fresh Fruit Platter	
Week 3						
	Main	Chicken Pizza With Wedges	Cottage Pie with Gravy	Roast Chicken with Stuffing with Roast Potatoes and Gravy	Beef Lasagne with Garlic Bread	MSC Battered Fish with Chips
17-Sep						
08-Oct	Vegetarian	Cheese and Tomato Pizza with wedges	Shepherdess Pie	Vegetable Wellington with Roast Potatoes and Gravy	Red Pepper Frittata with New Potatoes	Chilli with Rice or Chips
05-Nov		CHEESE ONION & MAYO	CHEESE AND BEANS	TUNA MAYO	CHEESE	BEANS
26-Nov		Sweet corn	Green Beans	Savoy Cabbage	Broccoli	Baked Beans
17-Dec		Mixed Peppers	Glazed carrots	Sweet corn	Tomato Salad	Garden Peas
	Dessert	Mandarin Upside Down Cake Yoghurt	Rice Pudding with Mixed Berries Yoghurt	Cheese, Apple and Biscuits Yoghurt	Yoghurt	Chocolate Sponge with Chocolate Drizzle Yoghurt and Fruit Station
		Fresh Fruit Platter	Fresh Fruit Salad	Fresh Fruit Chunks	Fresh Fruit Salad	



Available Daily
Freshly cooked jacket potatoes with a choice of fillings (where advertised)
Bread freshly baked on site daily
Daily salad selection



Lostwithiel School
Bodmin Hill
Lostwithiel
Cornwall
PL22 0AJ

www.lostwithiel.cornwall.sch.uk
Telephone: 01208 872339

**PRIDE,
PASSION,
PARTNERSHIP,
PERSEVERANCE,
PARTICIPATION.**

HOLIDAY AND SCHOOL CLOSURE DATES FOR SCHOOL YEAR 2018-2019

Please note in addition to the school term dates below, Lostwithiel School will also be closed for staff training days from Monday 3rd June to Friday 7th June, inclusive 2019.

Cornwall Council

2018/19 school term dates for community and voluntary-controlled schools



September 2018						
Mon		3	10	17	24	
Tue		4	11	18	25	
Wed		5	12	19	26	
Thurs		6	13	20	27	
Fri		7	14	21	28	
Sat	1	8	15	22	29	
Sun	2	9	16	23	30	

October 2018						
Mon	1	8	15	22	29	
Tue	2	9	16	23	30	
Wed	3	10	17	24	31	
Thurs	4	11	18	25		
Fri	5	12	19	26		
Sat	6	13	20	27		
Sun	7	14	21	28		

November 2018						
Mon		5	12	19	26	
Tue		6	13	20	27	
Wed		7	14	21	28	
Thurs	1	8	15	22	29	
Fri	2	9	16	23	30	
Sat	3	10	17	24		
Sun	4	11	18	25		

School holidays

Bank holidays

Christmas Day	25 December 2018
Boxing Day	26 December 2018
New Year's Day	01 January 2019
Good Friday	19 April 2019
Easter Monday	22 April 2019
Early May Holiday	06 May 2019
Spring Bank Holiday	27 May 2019
Summer Bank Holiday	26 August 2019

AUTUMN TERM 2018 (73 days)

04 September - 20 December
(Half term 22 - 26 October)

SPRING TERM 2019 (60 days)

07 January - 05 April
(Half term 18 - 22 February)

SUMMER TERM 2019 (62 days)

23 April - 25 July
(Half term 27 May - 31 May)

December 2018						
Mon		3	10	17	24	31
Tue		4	11	18	25	
Wed		5	12	19	26	
Thurs		6	13	20	27	
Fri		7	14	21	28	
Sat	1	8	15	22	29	
Sun	2	9	16	23	30	

January 2019						
Mon		7	14	21	28	
Tue	1	8	15	22	29	
Wed	2	9	16	23	30	
Thurs	3	10	17	24	31	
Fri	4	11	18	25		
Sat	5	12	19	26		
Sun	6	13	20	27		

February 2019						
Mon		4	11	18	25	
Tue		5	12	19	26	
Wed		6	13	20	27	
Thurs		7	14	21	28	
Fri	1	8	15	22		
Sat	2	9	16	23		
Sun	3	10	17	24		

March 2019						
Mon		4	11	18	25	
Tue		5	12	19	26	
Wed		6	13	20	27	
Thurs		7	14	21	28	
Fri	1	8	15	22	29	
Sat	2	9	16	23	30	
Sun	3	10	17	24	31	

April 2019						
Mon	1	8	15	22	29	
Tue	2	9	16	23	30	
Wed	3	10	17	24		
Thurs	4	11	18	25		
Fri	5	12	19	26		
Sat	6	13	20	27		
Sun	7	14	21	28		

May 2019						
Mon		6	13	20	27	
Tue		7	14	21	28	
Wed	1	8	15	22	29	
Thurs	2	9	16	23	30	
Fri	3	10	17	24	31	
Sat	4	11	18	25		
Sun	5	12	19	26		

June 2019						
Mon		3	10	17	24	
Tue		4	11	18	25	
Wed		5	12	19	26	
Thurs		6	13	20	27	
Fri		7	14	21	28	
Sat	1	8	15	22	29	
Sun	2	9	16	23	30	

July 2019						
Mon	1	8	15	22	29	
Tue	2	9	16	23	30	
Wed	3	10	17	24	31	
Thurs	4	11	18	25		
Fri	5	12	19	26		
Sat	6	13	20	27		
Sun	7	14	21	28		

August 2019						
Mon		5	12	19	26	
Tue		6	13	20	27	
Wed		7	14	21	28	
Thurs	1	8	15	22	29	
Fri	2	9	16	23	30	
Sat	3	10	17	24	31	
Sun	4	11	18	25		

195 days are included on the school calendar. Schools will be open to pupils for 190 days. The 5 additional days are allotted for In-Service Training.

Please note Lostwithiel will be closed to pupils from Monday 3 June to Friday 7th June inclusive for staff training (inset) days.