



Lostwithiel School  
Bodmin Hill  
Lostwithiel  
Cornwall  
PL22 0AJ

www.lostwithiel.cornwall.sch.uk  
Telephone: 01208 872339

**PRIDE,  
PASSION,  
PARTNERSHIP,  
PERSEVERANCE,  
PARTICIPATION.**

### Head's Hello

I have been lucky enough to spend lots of time in the children's classrooms this week and talking to children about their learning. It has been a real joy to listen to their enthusiasm, especially about maths and science. We have been doing some really exciting experiments this week and I have seen some great hands on learning. See if your child can tell you about the things they have learnt in science.

As the weather gets colder (and wetter!) please ensure your child comes to school with a coat and school jumper or fleece. We try to get the children outside in all weathers so they need their warm jumpers!

Natalie Simmonds  
Head Teacher

### THIS WEEK'S STAR LEARNERS

CHERRY	Inigo and Amelia
OAK	George B and Harper
BEECH	Louie and Leon
MAPLE	Marcus and Miley
CONKERS	Tilly R and Alastair



### This week's attendance

Cherry: 94.69	Beech: 96.17
Oak: 99.03	Maple: 96.30
	Conkers: 98.55

### JUST ONE TREE

Thank you for all your donations today for Just One Tree non-uniform day.

Just One Tree is a non-profit initiative removing CO2 from the atmosphere through global reforestation. Just One Tree supports established reforestation projects, namely the International Tree Foundation and Eden Reforestation Projects, who plant in areas severely affected by mass deforestation such as Kenya, Madagascar, Haiti & Indonesia. In doing so they have the greatest positive effect on global warming whilst simultaneously alleviating extreme poverty within impacted communities through training, education and employment. Just One Tree makes it simple for everyone to contribute to collective action on the climate crisis because Just £1 plants 1 Tree.

We're sure you will agree that tree planting is absolutely essential at this critical time for the planet.

You can join the FB event here:

<https://www.facebook.com/events/474053213318800/>

More information can be found at:

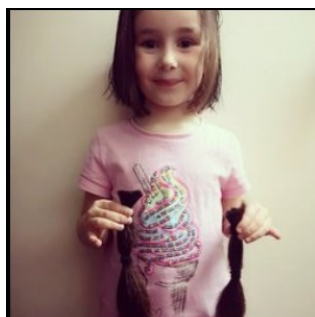
<https://www.justonetree.life/>

### REQUEST FROM FOREST SCHOOL



Forest School are looking for the following items if you have anything you can kindly donate please bring to the School Office; kitchen utensils for the outside kitchen and any suitable plastic matting for sitting on when the ground is not dry.

Thank you in advance!



Layla in Cherry Class has raised £200 in sponsorship for donating 7 inches of her hair to The Little Princess Trust. Well done Layla we are very proud of you!



Advanced notice that as school will close to pupils at 1.30pm on the last day of this term, there will be no After School Childcare Provision on Friday 20th December 2019. Breakfast Club will be available as normal on this day.

Last day of term: **Friday 20th December 2019 school closes to pupils at 1.30pm**

Return to school for Spring Term : **Monday 6th January 2020**



Lostwithiel School  
Bodmin Hill  
Lostwithiel  
Cornwall  
PL22 0AJ

www.lostwithiel.cornwall.sch.uk  
Telephone: 01208 872339

**PRIDE,  
PASSION,  
PARTNERSHIP,  
PERSEVERANCE,  
PARTICIPATION.**

**DATES FOR YOUR DIARY (Please check every week for new events being added)**

**Events shown in red are LSA fundraising events**

**DECEMBER**

- Fri 6th** Maple Class Cake Sale, 3.15pm in the Dining Hall  
**Wed 11th** Christmas lunch at school - (letters with an order form were issued to children earlier this week).  
**Thurs 12th** 2pm at St Bartholomew's Church—KS1 Nativity Performance  
**Fri 13th** 10am at St Bartholomew's Church—KS1 Nativity Performance  
**Tues 17th** Morning: Secret Santa  
**Tues 17th** 2pm KS2 (Beech, Maple, Conkers) Carol Concert in St Bartholomews Church, Parents/carers welcome  
**Thurs 19th** CHRISTMAS FAYRE— 2pm to 4pm in the School Hall  
**Fri 20th** Non Uniform Day—no donation required—Last day of term—Lostwithiel School will close to pupils at 1.30pm

**JANUARY**

- Mon 6th** Return to school

**2019/2020 Academic Year—Advance notice of these important dates**

Inset/training week school closed to children 1st June 2020 to 5th June 2020 (this is the week following May half term)

Year 6 SATS—11th May to 14th May 2020

Year 2 SATS—during May 2020

Year 1 Phonics screening—8th June to 12th June 2020

**FOOTBALL & NETBALL, Lostwithiel vs Fowey**

**Football years 3 and 4**

Having not trained or played a single match together as a school this was a new challenge for all involved. Fowey were excellent and you could tell that they had been training and playing games together for a lot longer than us. Every player gave their all and each one of them encouraged each other which was lovely to see. All in all for a first game together as a group they should all be very proud of themselves and hopefully with training starting soon we will be able to get that first win!

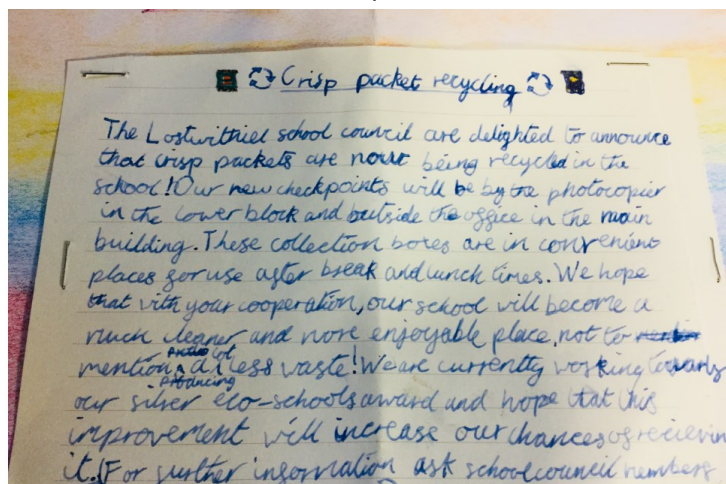
**Football years 5 and 6**

The game started off with both teams creating a couple of chances and the keepers from both teams making a couple of really good saves. Unfortunately Fowey took the lead with a goal that bounced around our penalty box before it saw a Fowey striker put it into the back of the net. There must have been no more than 5 minutes to play when the ball fell to Charlie about 20 yards out, he hit it on the half volley and it flew into the top corner to make it 2-2. Harvey worked tirelessly down the right side creating chance after chance but we just couldn't find the back of the net. With 1 minute remaining we had a corner. The ball was played into the box to Ashley who headed it against the crossbar. The rebound was followed up but struck the post. The ball eventually fell to Leo who was clinical and tucked the ball away to make the final score 3-2 to Lostwithiel, who made it very hard work for themselves on the day. With no games now until after Christmas, they have earned a well deserved rest.

**Netball years 5 and 6**

An excellent win for Lostwithiel against a good Fowey side. 4-2 to Lostwithiel, well done team and a great performance.

**CRISP PACKET RECYCLING, BY RAFFY MAPLE CLASS**







Lostwithiel School  
Bodmin Hill  
Lostwithiel  
Cornwall  
PL22 0AJ

www.lostwithiel.cornwall.sch.uk  
Telephone: 01208 872339

**PRIDE,  
PASSION,  
PARTNERSHIP,  
PERSEVERANCE,  
PARTICIPATION.**

**ALLERGY INFORMATION:** If your child has an allergy or intolerance please ask a member of the catering team for information. If your child has a school lunch and has a food allergy or intolerance you will be asked to complete a form to ensure we have the necessary information to cater for your child.

Cornwall Menu  
Autumn 2019

**caterlink**  
feeding the imagination

		Monday	Tuesday	Wednesday	Thursday	Friday
<b>Week 1</b> 28 <sup>th</sup> October 18 <sup>th</sup> November 9 <sup>th</sup> December 13 <sup>th</sup> January 3 <sup>rd</sup> February 2 <sup>nd</sup> March 23 <sup>rd</sup> March	<b>Main</b>	Chicken Pizza with Pasta	Sausage Plait with Mash Potato and Gravy	Roast Chicken and Stuffing with Roast Potatoes and Gravy	Spaghetti Bolognese with Garlic Bread	MSC Fish in Batter with Chips
	<b>Vegetarian</b>	Cheese and Tomato Pizza with Pasta Peas Sweetcorn	Creamy Vegetable Pie with Mash Potato and Gravy Cauliflower Broccoli	Quorn Fillet and Stuffing with Roast Potatoes and Gravy Savoy Cabbage Carrots	Vegetarian Spaghetti Bolognese with Garlic Bread Peas Sweetcorn	Cheese Quiche with Chips Baked Beans Peas
	<b>Dessert</b>	Orange Drizzle Cake	Yoghurt and Fruit	Apple Crumble with Custard	Jelly with Fruit	Oaty Cookie
<b>Week 2</b> 4 <sup>th</sup> November 25 <sup>th</sup> November 16 <sup>th</sup> December 20 <sup>th</sup> January 10 <sup>th</sup> February 9 <sup>th</sup> March	<b>Main</b>	Sausage and Mash Potato with Gravy	Mild Chicken Curry with Fluffy Rice	Roast Gammon with Roast Potatoes and Gravy	Macaroni Bolognese with Tomato Bread	MSC Fishfingers or Salmon Fishfingers with Chips
	<b>Vegetarian</b>	Quorn Sausage and Mash Potato with Gravy Carrots Green Beans	Mild Vegetable Curry with Fluffy Rice Sweetcorn Broccoli	Vegetarian Wellington with Roast Potatoes and Gravy Cauliflower Carrots	Macaroni Cheese with Garlic Bread Carrot and Cucumber Sticks Broccoli	Cheese Whirl with Chips Baked Beans Peas
	<b>Dessert</b>	Iced Sponge	Eves Pudding with Custard	Apple Flapjack	Jelly with Fruit	Chocolate Shortbread
<b>Week 3</b> 11 <sup>th</sup> November 2 <sup>nd</sup> December 6 <sup>th</sup> January 27 <sup>th</sup> January 24 <sup>th</sup> February 16 <sup>th</sup> March	<b>Main</b>	Beef Burger in a Bun with Pasta	Cottage Pie with Gravy	Roast Turkey and Stuffing with Roast Potatoes and Gravy	Chicken Lasagne with Garlic Bread	MSC Fishfingers with Chips
	<b>Vegetarian</b>	Quorn Burger in a Bun with Pasta Sweetcorn Baked Beans	Shepherdess Pie with Gravy Broccoli Green Beans	Quorn Fillet and Stuffing with Roast Potatoes and Gravy Carrots Cabbage	Vegetarian Lasagne with Garlic Bread Green Beans Sweetcorn	Five Bean Chilli with Chips Baked Beans Peas
	<b>Dessert</b>	Berry and Apple Cobbler with Custard	Carrot Cake	Apple, Cheese and Biscuits	Jelly and Fruit	Vanilla Shortbread

Available Daily  
Freshly cooked jacket potatoes with a choice of fillings (where advertised)  
Bread freshly baked on site daily  
Daily salad selection

**MAIN COURSE ALSO CHOICE OF A JACKET POTATO, THE FILLING IS CHEESE AND BEANS DAILY**

#### CHANGE OF MENU FOR WEDNESDAY 11 DECEMBER—CHRISTMAS LUNCH AT SCHOOL

**Roast Turkey or Quorn Roast with Roast Potatoes, Carrots, Peas, Stuffing and Gravy  
Iced Chocolate Sponge or Shortbread Biscuit**



**Your child's choice of lunch for this day must be ordered in advance (forms requested to be returned by Friday 22 November. Please contact the School Office if you have any queries**



Lostwithiel School  
Bodmin Hill  
Lostwithiel  
Cornwall  
PL22 0AJ

www.lostwithiel.cornwall.sch.uk  
Telephone: 01208 872339

**PRIDE,  
PASSION,  
PARTNERSHIP,  
PERSEVERANCE,  
PARTICIPATION.**

## LOSTWITHIEL SCHOOL TERM DATES AND INSET DAY INFORMATION

### CHANGE OF DATE FOR MAY BANK HOLIDAY 2020

The May Bank Holiday 2020 date has been changed

FROM: Monday 4th May TO: Friday 8th May

PLEASE NOTE THAT SCHOOL WILL BE OPEN AS USUAL ON MONDAY 4th MAY AND CLOSED TO PUPILS ON FRIDAY 8th MAY. THIS CHANGE HAS BEEN MADE NATIONALLY TO MARK THE ANNIVERSARY OF VE DAY.

### IMPORTANT NEWS REGARDING LOSTWITHIEL SCHOOL INSET DAYS

The Cornwall Council term dates and holidays for school year 2019/2020

#### SCHOOL YEAR 2019/2020

Lostwithiel School will be taking their staff training (inset) days in a week block again next year, during the 2019/2020 school year, following the May half term week. Therefore school will be closed to pupils from Monday 25th May to Friday 29th May 2020 (half term) and also the week following that from Monday 1st June to Friday 5th June 2020 (inset days). Pupils return to school on Monday 8th June 2020.

### Cornwall Council

#### 2019/20 school term dates for community and voluntary-controlled schools



September 2019						
Mon		2	9	16	23	30
Tue		3	10	17	24	
Wed		4	11	18	25	
Thurs		5	12	19	26	
Fri		6	13	20	27	
Sat		7	14	21	28	
Sun	1	8	15	22	29	

October 2019						
Mon		7	14	21	28	
Tue	1	8	15	22	29	
Wed	2	9	16	23	30	
Thurs	3	10	17	24	31	
Fri	4	11	18	25		
Sat	5	12	19	26		
Sun	6	13	20	27		

November 2019						
Mon		4	11	18	25	
Tue		5	12	19	26	
Wed		6	13	20	27	
Thurs		7	14	21	28	
Fri	1	8	15	22	29	
Sat	2	9	16	23	30	
Sun	3	10	17	24		

#### School holidays

#### Bank holidays

Christmas Day	25 December 2019
Boxing Day	26 December 2019
New Year's Day	01 January 2020
Good Friday	10 April 2020
Easter Monday	13 April 2020
Early May Holiday	08 May 2020
Spring Bank Holiday	25 May 2020
Summer Bank Holiday	31 August 2020

#### AUTUMN TERM 2019 (73 days)

04 September - 20 December  
(Half term 21 - 25 October)

#### SPRING TERM 2020 (55 days)

06 January - 27 March  
(Half term 17 - 21 February)

#### SUMMER TERM 2020 (67 days)

14 April - 23 July  
(Half term 25 May - 29 May)

*Lostwithiel School  
inset days 2020*

195 days are included on the school calendar. Schools will be open to pupils for 190 days. The 5 additional days are allotted for In-Service Training.

December 2019						
Mon		2	9	16	23	30
Tue		3	10	17	24	31
Wed		4	11	18	25	
Thurs		5	12	19	26	
Fri		6	13	20	27	
Sat		7	14	21	28	
Sun	1	8	15	22	29	

January 2020						
Mon		6	13	20	27	
Tue		7	14	21	28	
Wed	1	8	15	22	29	
Thurs	2	9	16	23	30	
Fri	3	10	17	24	31	
Sat	4	11	18	25		
Sun	5	12	19	26		

February 2020						
Mon		3	10	17	24	
Tue		4	11	18	25	
Wed		5	12	19	26	
Thurs		6	13	20	27	
Fri		7	14	21	28	
Sat	1	8	15	22	29	
Sun	2	9	16	23		

March 2020						
Mon		2	9	16	23	30
Tue		3	10	17	24	31
Wed		4	11	18	25	
Thurs		5	12	19	26	
Fri		6	13	20	27	
Sat		7	14	21	28	
Sun	1	8	15	22	29	

April 2020						
Mon		6	13	20	27	
Tue		7	14	21	28	
Wed	1	8	15	22	29	
Thurs	2	9	16	23	30	
Fri	3	10	17	24		
Sat	4	11	18	25		
Sun	5	12	19	26		

May 2020						
Mon		4	11	18	25	
Tue		5	12	19	26	
Wed		6	13	20	27	
Thurs		7	14	21	28	
Fri	1	8	15	22	29	
Sat	2	9	16	23	30	
Sun	3	10	17	24	31	

June 2020						
Mon	1	8	15	22	29	
Tue	2	9	16	23	30	
Wed	3	10	17	24		
Thurs	4	11	18	25		
Fri	5	12	19	26		
Sat	6	13	20	27		
Sun	7	14	21	28		

July 2020						
Mon		6	13	20	27	
Tue		7	14	21	28	
Wed	1	8	15	22	29	
Thurs	2	9	16	23	30	
Fri	3	10	17	24	31	
Sat	4	11	18	25		
Sun	5	12	19	26		

August 2020						
Mon		3	10	17	24	31
Tue		4	11	18	25	
Wed		5	12	19	26	
Thurs		6	13	20	27	
Fri		7	14	21	28	
Sat	1	8	15	22	29	
Sun	2	9	16	23	30	





Lostwithiel School  
Bodmin Hill  
Lostwithiel  
Cornwall  
PL22 0AJ

[www.lostwithiel.cornwall.sch.uk](http://www.lostwithiel.cornwall.sch.uk)  
Telephone: 01208 872339

**PRIDE,  
PASSION,  
PARTNERSHIP,  
PERSEVERANCE,  
PARTICIPATION.**

## LOSTWITHIEL SCHOOL UNIFORM

March 2019

Dear Parent/carer

Wovina continues to sell the Lostwithiel School uniform items. The uniform will not be stocked in their shop for general sale so all items will need to be pre-ordered. Items can be posted (postage is free for orders over £30, for purchases of under £30 please allow £2.50 for postage and packing) or you can call at Wovina to collect the items personally (please allow up to 14 days for items to be ordered). For those parents who do not have internet access Wovina will accept telephone orders.

**Wovina, 1-3 Omaha Road, Bodmin, PL31 1ER, Tel: 01208 833070, [www.wovina.com](http://www.wovina.com).**

The current Wovina prices, **as from 1st March 2019** for items showing the Lostwithiel School logo are:

**Full zip fleece: £13.20, Sweatshirt: £8.80, Cardigan (sweatshirt material) £11.65, PE T shirt: £4.30, PE Bag: £3.95, Book Bag: £4.70.**

**We would like to reiterate our school uniform policy:**

### Shoes

Plain black sensible shoes (no logo) – **No** canvas shoes, training shoes, boots, open toed or backless shoes.

### Sock/Tights

black tights, white or black socks

### Uniform

Black skirt or trousers (no jeans/leggings/jeggings)

Dark green polo shirt or white shirt/blouse (no white polo shirts)

Dark green jumpers/cardigans

**Items with Lostwithiel school logo:** dark green fleece, dark green sweatshirt, dark green cardigan (sweatshirt material)

**In warmer weather :** dark green and white check summer dress, black tailored shorts

### PE

Black shorts or black track suit bottoms, black PE skirt or black skirt

Training shoes

**Items with Lostwithiel School logo:** dark green PE T shirt

Thank you for your continued support with our policies.