



Lostwithiel School
Bodmin Hill
Lostwithiel
Cornwall
PL22 0AJ

www.lostwithiel.cornwall.sch.uk
Telephone: 01208 872339

**PRIDE,
PASSION,
PARTNERSHIP,
PERSEVERANCE,
PARTICIPATION.**

Head's Hello

We have had a whole school staff meeting this week looking to develop resilience and promote well-being within our school. The session was run by the Cornwall Healthy Schools team who have a great website if you would like some additional information. <https://www.cornwallhealthyschools.org/> With well-being in mind I am writing to ask for your support and kindness when contacting staff via class dojo or email. Our teaching staff are dedicated, hardworking individuals who tend to read messages even when they are supposed to be not working! Can I ask that you are sensitive about what you write and try and speak in person with them as a first step. Class dojo is a great tool for information sharing and urgent messages. Many thanks in advance for your understanding.

In other news I attended a meeting with Lostwithiel Town Forum on Wednesday evening. They are a group of volunteers who work together on schemes to help improve the town. Their next meeting is Wednesday 7th November at 7.30pm in The Platform meeting room, Lostwithiel Railway station. www.lostwithielforum.org

Kate Webber
Acting Head teacher

ATTENTION PARENTS/CARERS/CHILDREN IN RUNNING CLUB—As from Monday 1st October 2018 Running Club will end at 4.30pm. This revised finish time applies to running club only.

THIS WEEK'S STAR LEARNERS

Apple - Nell and Inigo
Cherry - The whole class for excellent work in their groups this week
Oak - Leon and Elowen
Willow - Harry and Emilia
Beech - Ryan and Katie
Maple - Harvey and Riley
Conkers - Sam, Ebony and Anya

This week's attendance:

Apple: 95.11%
Cherry: 94.91%
Oak: 97.53%
Willow: 99.31%
Beech: 100%
Maple: 99.52%
Conkers: 97.94%

CHILDREN CAN BRING IN THEIR SCOOTERS (THEY MUST ALSO HAVE A HELMET) TO USE AT BREAK TIME, SUPERVISED BY MR WAY. PLEASE SEE CLASS ROTA BELOW

Monday: Cherry
Tuesday: Oak
Wednesday: Willow/Beech
Thursday: Maple
Friday: Conkers

CATERLINK MENU CHANGE

Thursday 4th October (Census Day)

Please note the menu for this day will now be:

Sausage and Chips or Macaroni Cheese
Baked beans or peas
Ice Cream

Last day of half term—**Friday 19th October 2018**—Half term: Monday 22nd to Friday 26th October

Return to school— **Monday 29th October 2018**

After School Club phone 07821 645720 3.15pm to 5.30pm



Lostwithiel School
Bodmin Hill
Lostwithiel
Cornwall
PL22 0AJ

www.lostwithiel.cornwall.sch.uk
Telephone: 01208 872339

**PRIDE,
PASSION,
PARTNERSHIP,
PERSEVERANCE,
PARTICIPATION.**

DATES FOR YOUR DIARY (Please check every week for new events being added)

OCTOBER 2018

Tuesday 2nd Fowey River Academy year 7 intake 2019 Open day for children– details issued this week.
Tuesday 2nd Fowey River Academy year 7 intake 2019 Open Evening
Thursday 4th Bodmin College year 7 intake 2019 Open evening for parents and children 6.30pm to 8pm.
Saturday 5th Truro College– senior school open morning 9.30am to 12.30pm
w/c 8th Artsmark Celebration week
Thursday 11th School photographs– individual and sibling photographs.
Thursday 11th Lostwithiel School Association AGM at 2pm.
Friday 19th Family Friday
Monday 22nd to Friday 26th HALF TERM
31st October Last day to apply for a Year 7 secondary school place for a Year 6 child.

NOVEMBER 2018

Thursday 1st Year 1 (Cherry Class) hearing screening.
Friday 23rd Nasal Flu Immunisation– Years R,1,2,3,4 and 5.

HEALTH CHECKS TO BE HELD AT LOSTWITHIEL SCHOOL DURING THIS TERM

There are several health checks due to take place this term. As consents are required for some of these checks we will also keep this information in the newsletter for the next few weeks for your reference. Please contact the school office if you have any questions.

RECEPTION AND YEAR 6

HEALTH CHECKS

TO BE CONFIRMED

Booklets with a detachable form have been issued to children in Reception and Year 6. Parents only need to return their forms if they **do not** want their child to be weighed and measured. If a form is not returned consent will be assumed and your children will have the necessary checks. The form issued to Reception children also has a section regarding hearing checks when they are in Year 1. If you do not want your child to have a hearing check in Year 1 please tick the appropriate box as these forms will be retained and used for the Year 1 hearing check in the next academic year 2019/2020.

YEAR 1

HEARING CHECK

Thursday 1st November 2018

Children in Year 1 will be having hearing checks on Thursday 1st November 2018. Health check forms were issued to Year 1 children when they were in Reception class and these forms will be used to check for consent. If you did not return your form at that time consent will be assumed and your child will receive the hearing check. If you did not return your form and now do not want your child to have a hearing check please contact the school office.

RECEPTION, YEAR 1, YEAR 2, YEAR 3, YEAR 4, YEAR 5

Nasal Flu Vaccinations

Friday 23rd November

We have been advised that the Nasal Flu Vaccinations will take place on Friday 23rd November and will now be available to children in Years R,1,2,3,4,5. This year Kernow Health are introducing a digital consent (known as econsent) for parents. A copy of the letter from Kernow Health with the parent log on details is attached to this newsletter. You will be unable to click on the link as mentioned in the letter, however just type the web information into your browser bar. If you do not have online access please advise the school office.



Lostwithiel School
Bodmin Hill
Lostwithiel
Cornwall
PL22 0AJ

www.lostwithiel.cornwall.sch.uk
Telephone: 01208 872339

**PRIDE,
PASSION,
PARTNERSHIP,
PERSEVERANCE,
PARTICIPATION.**

TRANSFER TO SECONDARY SCHOOL 2019

Leaflets were sent home with your year 6 child recently with information on how to apply for a Year 7 place at Secondary School for your Year 6 child. We have attached a scanned copy of the leaflet to this newsletter and we have spare copies in the School Office. **Please note the closing date for applications: 31 October 2018**

FOWEY RIVER ACADEMY: OPEN DAY for children, Tuesday 2nd October during the school day.
FOWEY RIVER ACADEMY: OPEN EVENING, Tuesday 2nd October, 6pm to 9pm
BODMIN COLLEGE: OPEN EVENING, Bodmin College, Thursday 4th October 6.30pm to 8pm
TRURO SCHOOL: Senior School OPEN MORNING, Saturday 5th October 9.30am to 12.30pm

We are a 'Get Reading, Keep Reading, Change Everything' school. We use the highly successful Read Write Inc. Phonics programme to teach our children to read, write and spell. Our children do well in the phonics screening check and by Year 2, the majority are fluent readers with the best chance of success in the KS1 tests. Ruth



Miskin Training recognise us for teaching the programme with fidelity and passion—we know what it takes to make reading and writing pleasurable and rewarding for our children. This badge recognises that we; Raise standards in reading and writing for our children are all expertly training by Ruth Miskin Training—including our acting head teacher Kate Webber Gain the latest programme updates through regular visits from our Ruth Miskin Consultant Trainer Support our most vulnerable readers with extra one to one teaching every day. To visit the parent pages on the Ruth Miskin Training website go to : <http://ruthmiskin.com/en/find-out-more/parents/>

ADMISSIONS FOR RECEPTION CLASS SEPTEMBER 2019

Parents and carers of children who are due to start school in a reception class in September 2019 are being reminded of the deadline for applying for a school place which is midnight on 15th January 2019. This is for all children who were born between 1st September 2014 and 31st August 2015. Please DO NOT miss this deadline. You still need to apply even if your child has a sibling at this school. Parents can apply online at www.cornwall.gov.uk/admissions. If you do not have access to the internet, or are having problems completing the form online, please ask at the school office and we can arrange for you to have a paper version to complete. Family Information Services can also help with questions about School Admissions. They can be contacted on 0800 5878191.

If you applied on time you will be notified of your allocation on National Offer Day: 16 April 2019.



Lostwithiel School
Bodmin Hill
Lostwithiel
Cornwall
PL22 0AJ

www.lostwithiel.cornwall.sch.uk
Telephone: 01208 872339

**PRIDE,
PASSION,
PARTNERSHIP,
PERSEVERANCE,
PARTICIPATION.**

HARVEST TIME

A big thank you to all the parents/carers and children who have brought in their harvest gifts this week. We have had a wonderful response. The donated items will be taken to local Foodbanks.



Taylor with his full basket of gifts



FARM AND COUNTRY ROADSHOW AT LOSTWITHIEL SCHOOL
The ladies from The Royal Cornwall Show - Farm and Country Roadshow visited school this week.





Lostwithiel School
Bodmin Hill
Lostwithiel
Cornwall
PL22 0AJ

www.lostwithiel.cornwall.sch.uk
Telephone: 01208 872339

**PRIDE,
PASSION,
PARTNERSHIP,
PERSEVERANCE,
PARTICIPATION.**



SUNDAY OCTOBER 7TH PETS SERVICE

Followed by refreshments
and pet snacks!



© Can Stock Photo - csp19456944

All pets welcome

Dogs on leads

**Pets in cages are
fine**

Toy pets welcome

STARTS AT 11.00AM

**St Bartholomew's
Church**

**CHURCH LANE
Lostwithiel**



Lostwithiel School
Bodmin Hill
Lostwithiel
Cornwall
PL22 0AJ

www.lostwithiel.cornwall.sch.uk
Telephone: 01208 872339

**PRIDE,
PASSION,
PARTNERSHIP,
PERSEVERANCE,
PARTICIPATION.**

FUN PALACES

FUN & GAMES

BADGER FOREST SCHOOL
THE BEACON NATURE RESERVE

CORNWALL'S
REGIMENTAL
MUSEUM

THE OLD
LIBRARY

SUSTRANS
THE BEACON ACE ACADEMY

ST. PETROC'S CHURCH

SEARCH FOR
FUN PALACES BODMIN
ON FACEBOOK FOR
MORE INFO!

BODMIN & WENFORD
RAILWAY

SHARE THE
FUN WITH
#FunPalacesBodmin

FREE EVENTS ALL OVER BODMIN

SATURDAY 6TH & SUNDAY 7TH OCTOBER



Lostwithiel School
Bodmin Hill
Lostwithiel
Cornwall
PL22 0AJ

www.lostwithiel.cornwall.sch.uk
Telephone: 01208 872339

**PRIDE,
PASSION,
PARTNERSHIP,
PERSEVERANCE,
PARTICIPATION.**

CORNWALL COUNTY CHOIRS



MINI SINGERS

Aged 3—8? Love singing?

Mini Singers is Cornwall's County Choir for children aged 3 - 8.

Expect games, activities, movement and actions, funny songs and made-up songs. No auditions, just bring a smile!

Sessions, led by Lindsay Eddy and Alice Browning held once every month at Truro High School for Girls. Mini singer sessions are free and there are no auditions. Places are limited and must be pre-booked and your child must be accompanied by an adult for the duration of the session.

This year's first session is on **Saturday 6th October 3pm—3.45pm**
(please arrive from 2.45pm onwards)

Cornwall Mini Singers is part of The Cornwall County Choirs family,
Supported by the Cornwall Music Education Hub

Contact Lindsay Eddy to find out more and to book.

Email: leddyccc@gmail.com or alternatively call 01872 327351

**Cornwall Music
Education Hub**

Supported using public funding by



**ARTS COUNCIL
ENGLAND**





Lostwithiel School
Bodmin Hill
Lostwithiel
Cornwall
PL22 0AJ

www.lostwithiel.cornwall.sch.uk
Telephone: 01208 872339

**PRIDE,
PASSION,
PARTNERSHIP,
PERSEVERANCE,
PARTICIPATION.**



Kernow Health

Schools Immunisation Team

Protecting Cornwall's Children and Young People

Kernow Health CIC

School Immunisation Programme

1st Floor, Cudmore House

Oak Lane

Truro

Cornwall

TR1 3LP

Main Office Tel: 01872 221105/ 221106/ 221107

Email: Kernowhealth.schoolimmunisation@nhs.net

Website: www.kernowhealthcic.org.uk

11 September 2018

Dear Parent/Guardian

Your child's annual nasal flu vaccination is now due

Kernow Health is delivering the flu immunisation programme in Cornwall's schools on behalf of NHS England. Flu can be an unpleasant illness and sometimes causes serious complications. Vaccinating your child will also help protect more vulnerable friends and family by preventing the spread of flu.

In 2018/19 all children in **Reception and school years 1, 2, 3, 4 and 5** will be offered the vaccine.

The vaccination is free and recommended for young children; it is administered by a quick and simple spray up the nose. Please click on the following [link](#) to access information explaining the vaccination programme which also includes details about the small number of children for whom the nasal vaccine is not appropriate.

Please click on the following link to access the consent form: www.kernowimmunisations.co.uk/flu

PLEASE ENSURE YOU QUOTE THE FULL UNIQUE SCHOOL REFERENCE CODE. The code for your school is:

LOSTWITHIEL SCHOOL

EE142241

Please return your consent form as soon as possible. The form will not be available 2 days before we visit your child's school, but your child can still be immunised at one of our catch-up clinics. We are in the process of arranging dates with schools and once confirmed these will be on our website.

If your child becomes wheezy or has their asthma medication increased after you return this form, please contact Kernow Health on one of the numbers above.

If you decide you do not want to vaccinate your child against flu, please complete and return the consent form giving the reason. This will help us to plan and improve the service. Please tell us if you need this information in a different format.

Yours faithfully

Dr Terese Tubman

Clinical Lead School Immunisation Service

Chair: Dr Jonathan Katz

Chief Executive: Carolyn Andrews

Kernow Health CIC | Company Number: 07551978 | Registered Office: 1st Floor, Cudmore House, Oak Lane, Truro, Cornwall, TR1 3LP



Lostwithiel School
Bodmin Hill
Lostwithiel
Cornwall
PL22 0AJ

www.lostwithiel.cornwall.sch.uk
Telephone: 01208 872339

**PRIDE,
PASSION,
PARTNERSHIP,
PERSEVERANCE,
PARTICIPATION.**



Public Health
England



flu

5 reasons to vaccinate your child

- ✓ 1. **Protect your child.** The vaccine will help protect your child against flu and serious complications such as bronchitis and pneumonia
- ✓ 2. **Protect you, your family and friends.** Vaccinating your child will help protect more vulnerable family and friends
- ✓ 3. **No injection needed.** The nasal spray is painless and easy to have
- ✓ 4. **It's safer than flu.** The nasal spray helps protect against flu, has been given to millions of children worldwide and has an excellent safety record
- ✓ 5. **Avoid costs.** If your child gets flu, you may have to take time off work or arrange alternative childcare

What should I do?

Contact your GP if your child is aged two or three years old and you haven't heard from their GP by early November.

If your child is at primary school and is eligible, the school will send you a consent form. Please sign and return it.

If your child has a health condition that puts them at greater risk from flu, they are also eligible for the flu vaccine.

For more information visit
www.nhs.uk/child-flu

**STAY WELL
THIS WINTER**

Flu **i**mmunisation

Helping to protect everyone,
every winter



Lostwithiel School
Bodmin Hill
Lostwithiel
Cornwall
PL22 0AJ

www.lostwithiel.cornwall.sch.uk
Telephone: 01208 872339

**PRIDE,
PASSION,
PARTNERSHIP,
PERSEVERANCE,
PARTICIPATION.**



The
deadline for
applications
is 31 October
2018

Transfer to secondary school September 2019

Applying for a place in year seven at a secondary school

Information and guidance

Website and application form: www.cornwall.gov.uk/admissions

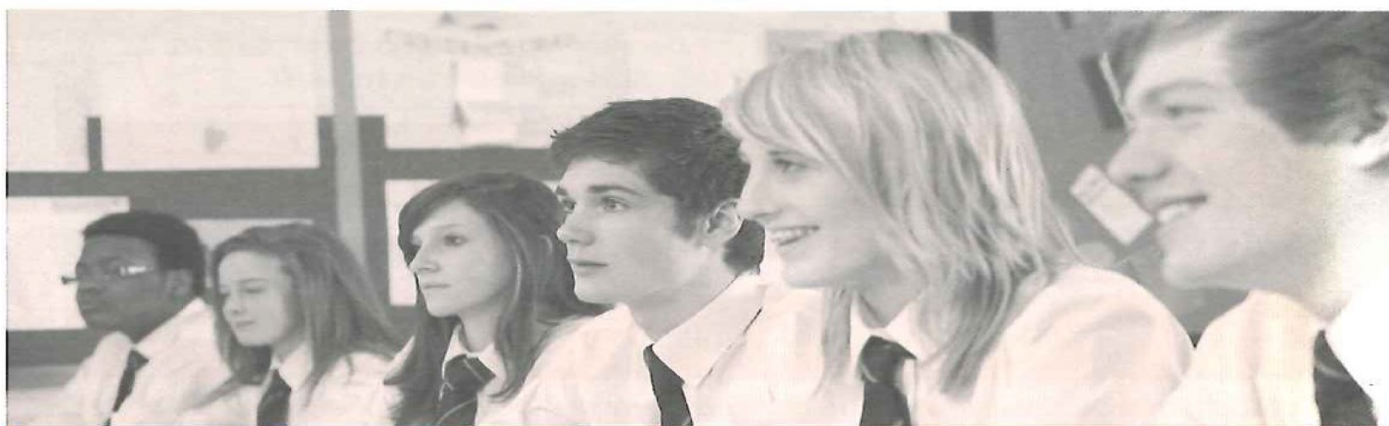
Email: schooladmissions@cornwall.gov.uk

Post: **School Admissions Team, County Hall, Truro, TR1 3AY**

Telephone: **0300 1234 101**

Need help with your application?

Contact the Family Information Service on **0800 587 8191**



www.cornwall.gov.uk





Lostwithiel School
Bodmin Hill
Lostwithiel
Cornwall
PL22 0AJ

www.lostwithiel.cornwall.sch.uk
Telephone: 01208 872339

**PRIDE,
PASSION,
PARTNERSHIP,
PERSEVERANCE,
PARTICIPATION.**

Applying for a secondary school place for September 2019

Special Educational Needs

If an Education, Health and Care (EHC) Plan has been issued for your child you do not need to complete an application form. Please contact the Statutory SEN Service for more information: Tel: **01872 324242** Email: **statutorysen@cornwall.gov.uk**

1 Decide on your preferred schools

You are strongly advised to name **three** preferences on the application form. **Naming a second or third preference does not give you any less chance of getting a place at your preferred school.** When making your decision you should...

...think about **how you will get your child to school.** Go to **www.cornwall.gov.uk/schooltransport** for more information on whether your child would be entitled to transport to school.

...look at the **admission arrangements** on our website that will be used to allocate places for each school.

...consider naming your **nearest or designated school** as one of your preferences. You can find your nearest or designated school on our website.

...look at the detailed **admissions information** on our website, also available on request.

2 Submit your application by 31 October 2018

Apply online at **www.cornwall.gov.uk/admissions**

3 Wait to find out which school you have been allocated

If you applied on time you will be notified of your allocation on **National Offer Day: 1 March 2019. Apply on time!** Late applications will only be dealt with after National Offer Day and there may not be any places left at your preferred schools.



Lostwithiel School
Bodmin Hill
Lostwithiel
Cornwall
PL22 0AJ

www.lostwithiel.cornwall.sch.uk
Telephone: 01208 872339

**PRIDE,
PASSION,
PARTNERSHIP,
PERSEVERANCE,
PARTICIPATION.**



**CORNWALL
COUNCIL**
one and all • onen hag oll

The
deadline for
applications is
15 January
2019

Starting school September 2019

Applying for a place in a reception class for children born between 1 September 2014 and 31 August 2015

Attending a nursery

Please note that attending a school's nursery does not guarantee your child a place at that school – you still need to apply. The criteria in the school's admission arrangements will be used to allocate places. Visit our website or contact us for more information.

Information and guidance

Website and application form: www.cornwall.gov.uk/admissions

Email: schooladmissions@cornwall.gov.uk

Post: **School Admissions Team, County Hall, Truro, TR1 3AY**

Telephone: **0300 1234 101**

Need help with your application?

Contact the Family Information Service on **0800 587 8191**



www.cornwall.gov.uk





Lostwithiel School
Bodmin Hill
Lostwithiel
Cornwall
PL22 0AJ

www.lostwithiel.cornwall.sch.uk
Telephone: 01208 872339

**PRIDE,
PASSION,
PARTNERSHIP,
PERSEVERANCE,
PARTICIPATION.**

Applying for a reception class place for September 2019

Special Educational Needs

If an Education, Health and Care (EHC) Plan has been issued for your child you do not need to complete an application form. Please contact the Statutory SEN Service for more information: Tel: **01872 324242** Email: statutorysen@cornwall.gov.uk

1 Decide on your preferred schools

You are strongly advised to name **three** preferences on the application form. **Naming a second or third preference does not give you any less chance of getting a place at your preferred school.** When making your decision you should...

...think about **how you will get your child to school.** Go to www.cornwall.gov.uk/schooltransport for more information on whether your child would be entitled to transport to school.

...look at the **admission arrangements** on our website that will be used to allocate places for each school.

...consider naming your **nearest or designated school** as one of your preferences. You can find your nearest or designated school on our website.

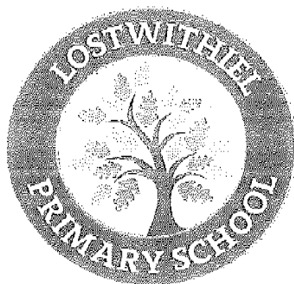
...look at the detailed **admissions information** on our website, also available on request.

2 Submit your application by 15 January 2019

Apply online at www.cornwall.gov.uk/admissions

3 Wait to find out which school you have been allocated

If you applied on time you will be notified of your allocation on **National Offer Day: 16 April 2019. Apply on time!** Late applications will only be dealt with after National Offer Day and there may not be any places left at your preferred schools.



Lostwithiel School
Bodmin Hill
Lostwithiel
Cornwall
PL23 0AJ

www.lostwithiel.cornwall.sch.uk
Telephone: 01208 872339

PRIDE
PASSION
PARTNERSHIP
PERSEVERANCE
PARTICIPATION

9 February 2018

Dear Parents and Carers,

I am writing to you to update you on the following attendance procedures we have put in place after agreeing a new attendance policy with the local governing body. Although we know that most families work really hard to ensure their children are at school every day, on time, average attendance at Lostwithiel Primary School is below the national average for England. Our school attendance target this year is 96.5%. We have now created a policy and system for when children's attendance falls below 95%. We are sharing this with you so that we can ensure the challenging of non-attendance is fair and consistent. Most children have excellent attendance and we want to thank all those families who make every effort to support this.

Lostwithiel School will now be referring unauthorised holidays of 10 sessions (5 school days) or more to Cornwall Council Education Welfare Service. This will be common practice from Easter 2018. This decision has been strongly recommended by the Regional Schools Commission, who visited our school in September and identified absence, particularly term time holidays, as an issue that is negatively affecting the outcomes of pupil at our school. This has been considered carefully by the school governors, senior leaders and the Peninsula Learning Trust.

The Department of Education no longer allows headteachers to grant any leave of absence during term time unless there are exceptional circumstances. If you consider that your request for absence is exceptional you will need to complete the request from the school office. Letters and emails requesting holiday will not be accepted. A response will be sent to you as soon as possible.

If leave is not authorised and you nevertheless withdraw your child from school, the absence will be recorded as unauthorised absence and you will be committing an offence under the Education Act 1996. We will then refer the matter to Cornwall Council who may decide to take legal action against you. The Penalty Notice Officer will consider requests when attendance is or would fall to below 94.5%. They will look at your child's current attendance and their attendance of the previous academic year. You can find further details on this on our website.

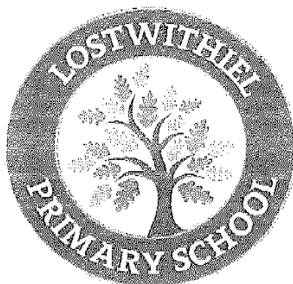
A Penalty Notice can be issued under Section 444A and 444B of the Education Act 1996. This carries a fine of £60 if paid within 21 days or £120 if paid after this but within 28 days. Failure to pay the Penalty Notice may result in Court action. Persistent absences not authorised by the school may result in a prosecution in the Magistrates Court, leading to fines up to £2,500 and/or custodial sentences. Please note that a Penalty is issued to each parent for each child taken out of school. Cases of ongoing and entrenched cases of poor attendance are dealt with separately by the school and EWS. Processes for this can be found on our website.

Celebrating Good Attendance:

We listened to feedback from parents and pupils last term and will be changing the way we celebrate good attendance. Instead of weekly class awards which caused concern for some children and families, we will be introducing a whole school half termly target of 96.5%. If the whole school reach this target, *all* pupils will celebrate together at the end of the term with a special celebration disco. We will still publish class attendance weekly in the newsletter to raise awareness of class attendance.

Headteacher: Natalie Simmonds

Lostwithiel School is part of the Peninsula Learning Trust, a company limited by guarantee. Registered in England and Wales at Unit 18, St Austell Business Park, Treverbyn Road, Carclaze, St Austell, Cornwall, PL25 4FD. Company number 07565242. An exempt charity.



Lostwithiel School
Bodmin Hill
Lostwithiel
Cornwall
PL22 0AJ

www.lostwithiel.cornwall.sch.uk
Telephone: 01208 872339

**PRIDE,
PASSION,
PARTNERSHIP,
PERSEVERANCE,
PARTICIPATION.**

Absence Reports and Requests

If you know your child is going to be absent from school you should contact the office and leave a message. If a child is absent without a reason, we will ring their named contacts to establish the reason for absence.

Following Department for Education guidance, we ask that all medical appointments be made outside of school hours. If this is not possible, please make sure the office have a copy of the appointment letter for your child's file. We will expect your child to be at school before and after the appointment (e.g. for an 11am appointment, we would expect your child to be collected at 10:30 and then returned to school for afternoon lessons).

Formal Steps to Challenge Non-Attendance

When attendance is not good enough we will meet with parents to discuss how it can be improved. If attendance still doesn't improve, we will take steps to challenge this, which ultimately may include prosecution, issued by Cornwall Council.

Attendance drops below 95%	Letter A sent home Phone call and/or meeting with school to establish causes of absence and how we can support this
Attendance drops below 93%	Letter B sent home No further absence for illness will be authorised, without a doctor's letter. Meeting with class teacher and headteacher to establish an improving attendance plan
Attendance drops below 90%	Child is classed as persistently absent, which we must report to the local authority. Meeting with head teacher and local authority for an education planning meeting. 100 day monitoring period- if attendance improves we will continue to monitor, if your child misses 10% of sessions during this period we will begin proceedings with EWS to prosecute

No-one wants to fine or prosecute parents (to be clear, any funds raised from this do not come back to the school so there is no financial incentive for schools to take this route) but we know that children need to be at school to achieve well. I hope never to need to take this action at Lostwithiel Primary School. Please come and talk to us if there are reasons why your child is not attending school regularly. It is much better to work with us early on, so that children do not become persistently absent.

Our Attendance policy, copies of our letters and information about penalty notices from county are available on our website attendance page.

http://www.lostwithiel.cornwall.sch.uk/website/attendance_information_/333894

Yours Sincerely

Natalie Simmonds

Headteacher: Natalie Simmonds

Lostwithiel School is part of the Peninsula Learning Trust, a company limited by guarantee. Registered in England and Wales at Unit 18, St Austell Business Park, Treverbyn Road, Carclaze, St Austell, Cornwall, PL25 4FD. Company number 07565242. An exempt charity.



Lostwithiel School
Bodmin Hill
Lostwithiel
Cornwall
PL22 0AJ

www.lostwithiel.cornwall.sch.uk
Telephone: 01208 872339

**PRIDE,
PASSION,
PARTNERSHIP,
PERSEVERANCE,
PARTICIPATION.**

LOSTWITHIEL SCHOOL UNIFORM

April 2018

Dear parent/carer

As you may know we have changed our school logo from the bridge logo to the tree logo you see on this letter. As a school that is trying hard to sustain our numbers, it is important that parents from Lostwithiel and outside the community can see that our school has an outdoor learning ethos, is a forest school that is underpinned by our 5 P values. We often found visitors or potential parents would know nothing about our outdoor areas or forest school. We hope that this logo shows what we offer more clearly. To reinforce this message further, we will be changing our uniform to a forest green colour. The new uniform will have the new logo.

The new dark green uniform will take effect from September 2018 however we would like to stress that there will be a transition period and that we do not expect parents/carers to purchase the new uniform unless they are intending to buy new items anyway. The existing red uniform that you currently own can still be worn until items need to be replaced. The school office have an item of clothing in the new colour should you wish to look at it.

Wovina will continue to sell the Lostwithiel School uniform items and the new green uniform will be available to purchase after the 21st May 2018. The uniform will not be stocked in their shop for general sale so all items will need to be pre-ordered. Items can be posted (for a purchase of under £20 please allow £2.50 for postage and packing) or you can call at Wovina to collect the items personally (please allow up to 14 days for items to be ordered). For those parents who do not have internet access Wovina will accept telephone orders.

Wovina, 1-3 Omaha Road, Bodmin, PL31 1ER, Tel: 01208 833070, www.wovina.com.

The current Wovina prices for items showing the Lostwithiel School logo are:

**Full zip fleece: £13.00, Sweatshirt: £8.60, Cardigan (sweatshirt material) £11.45, PE T shirt: £4.10,
PE Bag: £3.85, Book Bag: £4.50.**

We would like to reiterate our school uniform policy:

Shoes

Plain black sensible shoes (no logo) – **No** canvas shoes, training shoes, boots, open toed or backless shoes.

Sock/Tights

black tights, white or black socks

Uniform

Black skirt or trousers (no jeans/leggings/jeggings)

Dark green polo shirt or white shirt/blouse (no white polo shirts)

Dark green jumpers/cardigans

Items with Lostwithiel school logo: dark green fleece, dark green sweatshirt, dark green cardigan (sweatshirt material)

In warmer weather : dark green and white check summer dress, black tailored shorts

PE

Black shorts or black track suit bottoms, black PE skirt or black skirt

Training shoes

Items with Lostwithiel School logo: dark green PE T shirt

Thank you for your continued support with our policies.



Lostwithiel School
Bodmin Hill
Lostwithiel
Cornwall
PL22 0AJ

www.lostwithiel.cornwall.sch.uk
Telephone: 01208 872339

**PRIDE,
PASSION,
PARTNERSHIP,
PERSEVERANCE,
PARTICIPATION.**

LOSTWITHIEL SCHOOL TRAVEL AND SAFETY

29th January 2018

Dear Parents and Carers,

Governors and school staff are very concerned about the safety and congestion on Bodmin Hill and around the school car park at drop off and pick up times.

We have taken the following actions to try and improve the safety and organisation of these very busy times of the day.

- Staff members will no longer park on the left side of the car park. This area will be kept free to allow drivers with a disabled badge easy access to the spaces provided. It will also allow turning room for the taxis that provide transport from the county council.
- A member of staff will do a car park duty from 8:45 am to 9 am. This will be to ensure safe drop off in and around the car park.

Staff members, disabled badge holders, taxis and child care providers will be allowed access to the car park.

We politely ask all other parents and carers:

- Do not enter the carpark to 'drop off' or park your car. Please park away from the school car park and gate to ease congestion
- Do not park or stop on the yellow zig zags outside the school entrance. This is illegal and is dangerous as it blocks the entrance and line of sight for pedestrians and other drivers
- Drive slowly and considerately on Bodmin Hill for the safety of pedestrians and children.

Natalie Simmonds
Head Teacher

<p>ALLERGY INFORMATION: If your child has an allergy or intolerance please ask a member of the catering team for information. If your child has a school lunch and has a food allergy or intolerance you will be asked to complete a form to ensure we have the necessary information to cater for your child.</p>						
<p>Gold Menu Autumn 2018</p>						
<p>caterlink feeding the imagination</p>						
		Monday	Tuesday	Wednesday	Thursday	Friday
Week 1						
	Main	Sausage Pasta Bake With Garlic Bread	Chicken Stir Fry with Noodles	Roast (as advertised) with Roast Potatoes and Gravy	Spaghetti Beef Bolognese (Made with organic mince)	MSC Battered Fish with Chips Fishfingers with Chips
03-Sep	Vegetarian	Vegetarian Risotto	Mac and Cheese with Garlic Bread	Quorn Roast with Roast Potatoes and Gravy	Sweet & Sour Vegetables with Noodles	Vegetable wraps with Rice or Chips
24-Sep		CHEESE & BEANS Baked Tomatoes Peas	CHEESE & Peppers Green Beans	TUNA MAYO Swede Mash and Carrots	CHEESE, ONION & MAYO Sweet corn Broccoli	Baked Beans Garden Peas
15-Oct						
12-Nov						
03-Dec	Dessert	Apple Crumble & Custard Yoghurt Fresh Fruit Platter	Yoghurt Fresh Fruit Salad	Carrot and Courgette Cake & Custard Yoghurt Fresh Fruit Platter	Apple & Raisin Strudel with Custard Yoghurt Fresh Fruit Salad	Chocolate Cocoa Cookie Yoghurt and Fruit Station
Week 2						
	Main	Beef Meatballs in Tomato Sauce with Rice	Chicken and Broccoli Pasta Bake	Roast Turkey with Roast Potatoes and Gravy	Chicken Curry With Rice	MSC Battered Fish with Chips
10-Sep	Vegetarian	Vegetarian Lasagne Jacket Wedges	Vegetarian Bolognaise with Spaghetti	Mixed Vegetable Loaf with Roast Potatoes and Gravy	Mac and Cheese with Garlic Bread	Cheese & Tomato Quiche with Chips
01-Oct		TUNA MAYO Coleslaw Sweet corn	CHEESE Peas Carrots	CHEESE, ONION & MAYO Broccoli Cauliflower	CHEESE AND BEANS Sweet corn	Baked Beans Garden Peas
22-Oct						
19-Nov						
10-Dec	Dessert	Eves Pudding with Custard Yoghurt Fresh Fruit Platter	Pineapple Loaf Yoghurt Fresh Fruit Chunks	Chocolate & Banana Oaty Square Yoghurt Fresh Fruit Salad	Oaty Peach Crumble with Custard Yoghurt Fresh Fruit Platter	Vanilla shortbread biscuit Yoghurt and Fruit Station
Week 3						
	Main	Chicken Pizza With Wedges	Cottage Pie with Gravy	Roast Chicken with Stuffing with Roast Potatoes and Gravy	Beef Lasagne with Garlic Bread	MSC Battered Fish with Chips
17-Sep	Vegetarian	Cheese and Tomato Piza with wedges	Shepherdess Pie	Vegetable Wellington with Roast Potatoes and Gravy	Red Pepper Frittata with New Potatoes	Chilli with Rice or Chips
08-Oct		CHEESE, ONION & MAYO Sweet corn Mixed Peppers	CHEESE AND BEANS Green Beans Glazed carrots	TUNA MAYO Savoy Cabbage Sweetcorn	CHEESE Broccoli Tomato Salad	Baked Beans Garden Peas
05-Nov						
26-Nov						
17-Dec	Dessert	Mandarin Upside Down Cake Yoghurt Fresh Fruit Platter	Rice Pudding with Mixed Berries Yoghurt Fresh Fruit Salad	Cheese, Apple and Biscuits Yoghurt Fresh Fruit Chunks	Yoghurt Fresh Fruit Salad	Chocolate Sponge with Chocolate Drizzle Yoghurt and Fruit Station



Lostwithiel School
Bodmin Hill
Lostwithiel
Cornwall
PL22 0AJ

www.lostwithiel.cornwall.sch.uk
Telephone: 01208 872339

**PRIDE,
PASSION,
PARTNERSHIP,
PERSEVERANCE,
PARTICIPATION.**

HOLIDAY AND SCHOOL CLOSURE DATES FOR SCHOOL YEAR 2018-2019

Please note in addition to the school term dates below, Lostwithiel School will also be closed for staff training days from Monday 3rd June to Friday 7th June, inclusive 2019.

Cornwall Council

2018/19 school term dates for community and voluntary-controlled schools



September 2018						
Mon		3	10	17	24	
Tue		4	11	18	25	
Wed		5	12	19	26	
Thurs		6	13	20	27	
Fri		7	14	21	28	
Sat	1	8	15	22	29	
Sun	2	9	16	23	30	

October 2018						
Mon	1	8	15	22	29	
Tue	2	9	16	23	30	
Wed	3	10	17	24	31	
Thurs	4	11	18	25		
Fri	5	12	19	26		
Sat	6	13	20	27		
Sun	7	14	21	28		

November 2018						
Mon		5	12	19	26	
Tue		6	13	20	27	
Wed		7	14	21	28	
Thurs	1	8	15	22	29	
Fri	2	9	16	23	30	
Sat	3	10	17	24		
Sun	4	11	18	25		

School holidays

Bank holidays

Christmas Day	25 December 2018
Boxing Day	26 December 2018
New Year's Day	01 January 2019
Good Friday	19 April 2019
Easter Monday	22 April 2019
Early May Holiday	06 May 2019
Spring Bank Holiday	27 May 2019
Summer Bank Holiday	26 August 2019

AUTUMN TERM 2018 (73 days)

04 September - 20 December
(Half term 22 - 26 October)

SPRING TERM 2019 (60 days)

07 January - 05 April
(Half term 18 - 22 February)

SUMMER TERM 2019 (62 days)

23 April - 25 July
(Half term 27 May - 31 May)

195 days are included on the school calendar. Schools will be open to pupils for 190 days. The 5 additional days are allotted for In-Service Training.

Please note Lostwithiel will be closed to pupils from Monday 3 June to Friday 7th June inclusive for staff training (inset) days.

December 2018						
Mon		3	10	17	24	31
Tue		4	11	18	25	
Wed		5	12	19	26	
Thurs		6	13	20	27	
Fri		7	14	21	28	
Sat	1	8	15	22	29	
Sun	2	9	16	23	30	

January 2019						
Mon		7	14	21	28	
Tue	1	8	15	22	29	
Wed	2	9	16	23	30	
Thurs	3	10	17	24	31	
Fri	4	11	18	25		
Sat	5	12	19	26		
Sun	6	13	20	27		

February 2019						
Mon		4	11	18	25	
Tue		5	12	19	26	
Wed		6	13	20	27	
Thurs		7	14	21	28	
Fri	1	8	15	22		
Sat	2	9	16	23		
Sun	3	10	17	24		

March 2019						
Mon		4	11	18	25	
Tue		5	12	19	26	
Wed		6	13	20	27	
Thurs		7	14	21	28	
Fri	1	8	15	22	29	
Sat	2	9	16	23	30	
Sun	3	10	17	24	31	

April 2019						
Mon	1	8	15	22	29	
Tue	2	9	16	23	30	
Wed	3	10	17	24		
Thurs	4	11	18	25		
Fri	5	12	19	26		
Sat	6	13	20	27		
Sun	7	14	21	28		

May 2019						
Mon		6	13	20	27	
Tue		7	14	21	28	
Wed	1	8	15	22	29	
Thurs	2	9	16	23	30	
Fri	3	10	17	24	31	
Sat	4	11	18	25		
Sun	5	12	19	26		

June 2019						
Mon		3	10	17	24	
Tue		4	11	18	25	
Wed		5	12	19	26	
Thurs		6	13	20	27	
Fri		7	14	21	28	
Sat	1	8	15	22	29	
Sun	2	9	16	23	30	

July 2019						
Mon	1	8	15	22	29	
Tue	2	9	16	23	30	
Wed	3	10	17	24	31	
Thurs	4	11	18	25		
Fri	5	12	19	26		
Sat	6	13	20	27		
Sun	7	14	21	28		

August 2019						
Mon		5	12	19	26	
Tue		6	13	20	27	
Wed		7	14	21	28	
Thurs	1	8	15	22	29	
Fri	2	9	16	23	30	
Sat	3	10	17	24	31	
Sun	4	11	18	25		