



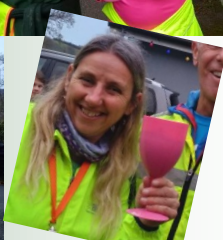
Lostwithiel School  
Bodmin Hill  
Lostwithiel  
Cornwall  
PL22 0AJ

[www.lostwithiel.cornwall.sch.uk](http://www.lostwithiel.cornwall.sch.uk)  
Telephone: 01208 872339

**PRIDE,  
PASSION,  
PARTNERSHIP,  
PERSEVERANCE,  
PARTICIPATION.**



*We wish you all a very Merry Christmas and a Happy New Year. Thank you to all staff, children, parents and carers for your input this term. We could not have done it without you! I hope you enjoy time with your loved ones over the break and we will look forward to seeing you all in January.*



Return to school for Spring Term : **Tuesday 4th January 2022**

INSET DAY: **Friday 18th February 2022**

Half Term: **Monday 21st to Friday 25th February 2022**

Last day of Spring term: **Friday 8th April 2022**

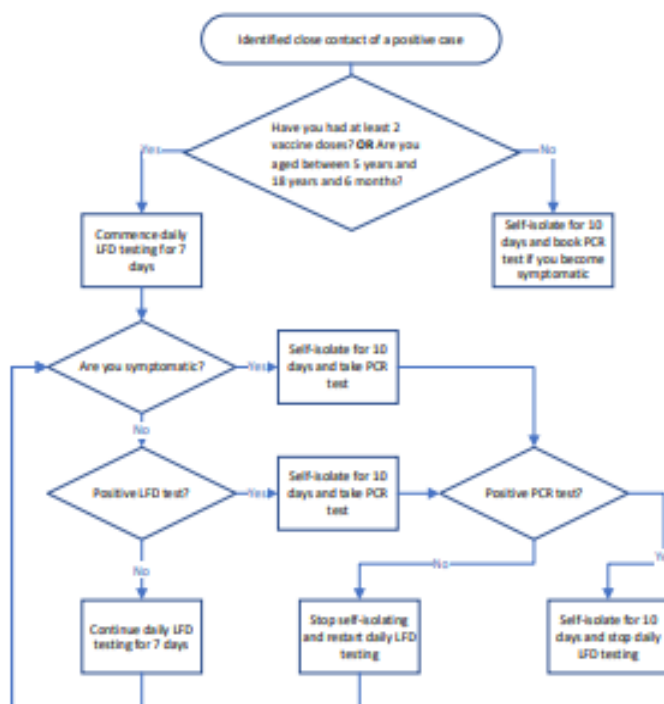


Lostwithiel School  
Bodmin Hill  
Lostwithiel  
Cornwall  
PL22 0AJ

www.lostwithiel.cornwall.sch.uk  
Telephone: 01208 872339

**PRIDE,  
PASSION,  
PARTNERSHIP,  
PERSEVERANCE,  
PARTICIPATION.**

#### Self-isolation and testing requirements w.e.f. Tuesday 14<sup>th</sup> December 2021



**Please note:** this diagram should be read alongside the [COVID-19 guidance for schools](#). The DfE has confirmed that national Daily Testing of Contacts of Covid (now called DTCC) is 'strongly advised' and therefore is advisory only. A staff member or pupil does not have to isolate if they are identified as a close contact of a positive case, and if they choose not to participate, they should not be denied access to school.

#### Breakfast and After School club bookings

From January 2022, we ask that breakfast and after school bookings are made in advance, by Friday lunchtime for the following week. Due to staffing, we may have to cap the numbers within the provision and as a result if this is not booked in advance we may not be able to accommodate your request.

Please ensure any bookings that are no longer required, are cancelled 24 hours in advance

We still have some outstanding balances for provision on Parent Pay. Going into the new year please ensure these are settled. Just a polite reminder that wraparound care and school lunches should be paid for in advance.

School (including breakfast and after school club) and Nursery will reopen Tuesday 4th January 2022  
After school activity clubs (running, football, netball and multi skills) will resume w/c 10th January 2022

**Return to school for Spring Term : Tuesday 4th January 2022**

**INSET DAY: Friday 18th February 2022**

**Half Term: Monday 21st to Friday 25th February 2022**

**Last day of Spring term: Friday 8th April 2022**





Lostwithiel School  
Bodmin Hill  
Lostwithiel  
Cornwall  
PL22 0AJ

www.lostwithiel.cornwall.sch.uk  
Telephone: 01208 872339

**PRIDE,  
PASSION,  
PARTNERSHIP,  
PERSEVERANCE,  
PARTICIPATION.**

## LOSTWITHIEL SCHOOL LUNCH MENU FROM SEPTEMBER 2021

<b>WEEK 1</b> for 2 <sup>nd</sup> & 3 <sup>rd</sup> September 2021 and weeks commencing: 20 <sup>th</sup> Sep, 11 <sup>th</sup> Oct, 1 <sup>st</sup> Nov, 22 <sup>nd</sup> Nov, 13 <sup>th</sup> Dec, 3 <sup>rd</sup> Jan, 24 <sup>th</sup> Jan, 14 <sup>th</sup> Feb, 7 <sup>th</sup> March, 28 <sup>th</sup> March (v) = vegetarian					
	MONDAY	TUESDAY	WEDNESDAY	THURSDAY	FRIDAY
<b>MAIN DISH</b>	Burrito (v) A soft wrap filled with lightly spiced vegetables & rice	Chicken filo pie with mashed potato	Roast chicken, roast potatoes, gravy	Pasta bolognese	Fish fingers with chips
<b>ALTERNATIVE MAIN DISH</b>	Macaroni cheese (v)	BBQ beans served with cornbread (v)	Sweet potato & chickpea roast, roast potatoes, gravy(v)	Butternut squash & tomato bake with rice (v)	Quorn dippers with chips (v)
<b>VEGETABLES</b>	Green beans & sweetcorn	Peas & broccoli	Carrots & cabbage	Broccoli & sweetcorn	Baked beans & peas
<b>JACKET POTATO</b>	With cheese & baked beans	With salmon mayonnaise	With cheese & baked beans	With cheese & baked beans	With cheese & baked beans
<b>DESSERT</b> A choice of main dessert or fresh fruit or yoghurt each day	Raspberry ripple ice cream	Brownie	Shortbread biscuit with fresh fruit slices	Berry & peach oatie crumble with custard	Orange and sultana cake slice
	Fresh fruit	Fresh fruit	Fresh fruit	Fresh fruit	Fresh fruit
	Yoghurt	Yoghurt	Yoghurt	Yoghurt	Yoghurt

<b>WEEK 2</b> For weeks commencing: 6 <sup>th</sup> Sept, 27 <sup>th</sup> Sept, 18 <sup>th</sup> Oct, 8 <sup>th</sup> Nov, 29 <sup>th</sup> Nov, 10 <sup>th</sup> Jan, 31 <sup>st</sup> Jan, 14 <sup>th</sup> March, 4 <sup>th</sup> April (v) = vegetarian					
	MONDAY	TUESDAY	WEDNESDAY	THURSDAY	FRIDAY
<b>MAIN DISH</b>	Veggie bolognese (v)	Crispy chicken katsu with rice	Roast turkey, roast potatoes, gravy	Cottage pie (minced beef with a crispy potato topping)	Fish fingers with chips
<b>ALTERNATIVE MAIN DISH</b>	Cheese & tomato pizza (v)	Vegetable noodles with tofu (v)	Creamy vegetable pie, roast potatoes, gravy (v)	Mild chickpea and potato curry with wholemeal rice (v)	Tomato vegetable burger with chips (v)
<b>VEGETABLES</b>	Green beans & sweetcorn	Broccoli & peas	Cabbage & carrots	Green beans & sweetcorn	Peas & baked beans
<b>JACKET POTATO</b>	With cheese & baked beans	With cheese & baked beans	With cheese & baked beans	With cheese & baked beans	With cheese & baked beans
<b>DESSERT</b> A choice of main dessert or fresh fruit or yoghurt each day	Flapjack with fruit slice	Peach shortbread pudding with custard	Raspberry yoghurt cake	Fruity chocolate brownie	Vanilla ice cream
	Fresh fruit	Fresh fruit	Fresh fruit	Fresh fruit	Fresh fruit
	Yoghurt	Yoghurt	Yoghurt	Yoghurt	Yoghurt

<b>WEEK 3</b> For weeks commencing: 13 <sup>th</sup> Sept, 4 <sup>th</sup> Oct, 15 <sup>th</sup> Nov, 6 <sup>th</sup> Dec, 17 <sup>th</sup> Jan, 7 <sup>th</sup> Feb, 28 <sup>th</sup> Feb, 21 <sup>st</sup> March (v) = vegetarian					
	MONDAY	TUESDAY	WEDNESDAY	THURSDAY	FRIDAY
<b>MAIN DISH</b>	Macaroni cheese	Garlicky chicken with Spanish style potatoes	Roast pork, roast potatoes, gravy	Cornish steak pasty with potato wedges	Southern fried chicken tasters with chips
<b>ALTERNATIVE MAIN DISH</b>	Vegetarian sausage with mash and gravy (v)	Cheesy risotto bake (v)	Meat free roast, roast potatoes, gravy (v)	Vegetable lasagne with a bread wedge (v)	Soft taco filled with vegetables and tomato chilli sauce with chips (v)
<b>VEGETABLES</b>	Peas & carrots	Sweetcorn & broccoli	Carrots & cabbage	Green beans & sweetcorn	Baked beans & peas
<b>JACKET POTATO</b>	With cheese & baked beans	With cheese & baked beans	With cheese & baked beans	With cheese & baked beans	With cheese & baked beans
<b>DESSERT</b> A choice of main dessert or fresh fruit or yoghurt each day	Oatie biscuit with fruit slices	Apple & carrot yoghurt muffin	Strawberry ice cream	Chocolate sponge cake	Crispy snow bar
	Fresh fruit	Fresh fruit	Fresh fruit	Fresh fruit	Fresh fruit
	Yoghurt	Yoghurt	Yoghurt	Yoghurt	Yoghurt

Return to school for Spring Term: Tuesday 4<sup>th</sup> January 2022

**INSET DAY: Friday 18th February 2022**

**Half Term: Monday 21st to Friday 25th February 2022**

**Last day of Spring term: Friday 8th April 2022**



Lostwithiel School  
Bodmin Hill  
Lostwithiel  
Cornwall  
PL22 0AJ

www.lostwithiel.cornwall.sch.uk  
Telephone: 01208 872339

**PRIDE,  
PASSION,  
PARTNERSHIP,  
PERSEVERANCE,  
PARTICIPATION.**

## LOSTWITHIEL SCHOOL TERM DATES 2021/2022

SEPTEMBER 2021						
Mon		6	13	20	27	
Tues		7	14	21	28	
Wed	1	8	15	22	29	
Thurs	2	9	16	23	30	
Fri	3	10	17	24		
Sat	4	11	18	25		
Sun	5	12	19	26		

OCTOBER 2021						
Mon		4	11	18	25	
Tues		5	12	19	26	
Wed		6	13	20	27	
Thurs		7	14	21	28	
Fri	1	8	15	22	29	
Sat	2	9	16	23	30	
Sun	3	10	17	24	31	

NOVEMBER 2021						
Mon		1	8	15	22	29
Tues		2	9	16	23	30
Wed		3	10	17	24	
Thurs		4	11	18	25	
Fri		5	12	19	26	
Sat		6	13	20	27	
Sun		7	14	21	28	

DECEMBER 2021						
Mon		6	13	20	27	
Tues		7	14	21	28	
Wed	1	8	15	22	29	
Thurs	2	9	16	23	30	
Fri	3	10	17	24	31	
Sat	4	11	18	25		
Sun	5	12	19	26		

JANUARY 2022						
Mon		3	10	17	24	31
Tues		4	11	18	25	
Wed		5	12	19	26	
Thurs		6	13	20	27	
Fri		7	14	21	28	
Sat	1	8	15	22	29	
Sun	2	9	16	23	30	

FEBRUARY 2022						
Mon			7	14	21	28
Tues		1	8	15	22	
Wed		2	9	16	23	
Thurs		3	10	17	24	
Fri		4	11	18	25	
Sat		5	12	19	26	
Sun		6	13	20	27	

MARCH 2022						
Mon		7	14	21	28	
Tues	1	8	15	22	29	
Wed	2	9	16	23	30	
Thurs	3	10	17	24	31	
Fri	4	11	18	25		
Sat	5	12	19	26		
Sun	6	13	20	27		

APRIL 2022						
Mon			4	11	18	25
Tues			5	12	19	26
Wed			6	13	20	27
Thurs			7	14	21	28
Fri		1	8	15	22	29
Sat		2	9	16	23	30
Sun		3	10	17	24	

MAY 2022						
Mon		2	9	16	23	30
Tues		3	10	17	24	31
Wed		4	11	18	25	
Thurs		5	12	19	26	
Fri		6	13	20	27	
Sat		7	14	21	28	
Sun	1	8	15	22	29	

JUNE 2022						
Mon		6	13	20	27	
Tues		7	14	21	28	
Wed	1	8	15	22	29	
Thurs	2	9	16	23	30	
Fri	3	10	17	24		
Sat	4	11	18	25		
Sun	5	12	19	26		

JULY 2022						
Mon			4	11	18	25
Tues			5	12	19	26
Wed			6	13	20	27
Thurs			7	14	21	28
Fri		1	8	15	22	29
Sat		2	9	16	23	30
Sun		3	10	17	24	31

AUGUST 2022						
Mon		1	8	15	22	29
Tues		2	9	16	23	30
Wed		3	10	17	24	31
Thurs		4	11	18	25	
Fri		5	12	19	26	
Sat		6	13	20	27	
Sun		7	14	21	28	

### BANK HOLIDAYS

Christmas Day (in lieu)	Monday 27th December 2022
Boxing Day (in lieu)	Tuesday 28th December 2022
New Years Day (in lieu)	Monday 3rd January 2022
Good Friday	Friday 15th April 2022
Easter Monday	Monday 18th April 2022
May Bank Holiday	Monday 2nd May 2022
Spring Bank Holiday	Thursday 2nd June 2022
As the extra Bank Holiday for the Platinum Jubilee, Friday 3rd June, falls within the Spring Half Term, schools can allocate this to another day	

### SCHOOL HOLIDAYS AND HALF TERM HOLIDAYS

Autumn Half Term	Monday 25th to Friday 29th October 2021
Spring Half Term	Monday 21st to Friday 25th February 2022
Summer Half Term	Monday 30th May to Friday 3rd June 2022

### LOSTWITHIEL SCHOOL INSET DAYS

1 day - Friday 18th February 2022
5 days - Monday 6th June to Friday 10th June 2022
1 day - Monday 25th July 2022
1 day - Tuesday 26th July 2022 (in lieu of extra bank holiday - which falls in the Spring half term - for the Platinum Jubilee year)

Return to school for Spring Term : **Tuesday 4th January 2022**

INSET DAY: **Friday 18th February 2022**

Half Term: **Monday 21st to Friday 25th February 2022**

Last day of Spring term: **Friday 8th April 2022**