

Lostwithiel Primary School

Newsletter SPRING TERM - 13.03.2020



Lostwithiel School
Bodmin Hill
Lostwithiel
Cornwall
PL22 0AJ

www.lostwithiel.cornwall.sch.uk
Telephone: 01208 872339

**PRIDE,
PASSION,
PARTNERSHIP,
PERSEVERANCE,
PARTICIPATION.**

Head's Hello,

I have been talking to some parents and carers about how best to communicate and celebrate all of the extra curricular things we do as a school, with the LSA and with outside visitors. It is always a balancing act to ensure we cover all of the Curriculum, Forest School, PE events and fit in enough exciting visitors and trips for each child. We know that sometimes, things seem to happen all at once, or things might seem focused on certain year groups but we are always trying our best to ensure the broad and balanced curriculum reaches each of our children. To try to achieve that careful balance I am going to hold an extra steering group after Easter to put together an annual planner with the LSA and parents so that we can ensure things are paced evenly and fairly through the year. As always, we will have to allow for contingency but we hope that this will address some concerns raised.

Corona Virus Update

We have been using hand sanitiser and encouraging good hand hygiene with all of the children during the school day. We do not have any identified risks in school and we as a staff are remaining calm. School is very much business as usual but we will inform parents immediately if anything changes. You will receive an eschools log in for your child(ren) in the next few days, this will come home via your child's bookbag. This is a log in for our school website that has an online learning platform. We will send more information out on Monday regarding home learning in the result of a school closure. If you do not have any internet access or a device at home please let school know so that we can provide hard copies of any learning.

Natalie Simmonds
Headteacher

THIS WEEK'S STAR LEARNERS

CHERRY Denny and Immy

OAK Maya and Claudia

BEECH Taylor and Leon

MAPLE Alex and Lois

CONKERS The whole class for their amazing writing for The girl and the fox story



This week's attendance

Cherry: 93.94%	Beech: 95.02%
Oak: 94.20%	Maple: 98.72%
Conkers: 98.99%	

AFTER SCHOOL CLUB CONTACT INFORMATION

Just a reminder that if you need to contact Mrs George in the after school childcare provision please call their direct number: 07821 645720. If you call the office and leave a message on the voicemail it may not be picked up until the next day as the office is without a member of staff from 3.30pm. Thank you.

RACE FOR LIFE

At Lostwithiel School, Friday 20th March

Your child will have brought home a sponsor form this week. The whole school will be taking part in the Race for Life at school on Friday 20th March. The children may come to school on that day in sportswear but will need to bring a change of clothes for afterwards (in case the field is muddy). Can all sponsor forms and monies to be returned to school (class or the school office) by **Thursday 19th March**. The children will all receive a medal for taking part. If you have any further questions please email the LSA at:

lostwithielsa@gmail.com



Last day of term: **Friday 27th March 2020**

Return to school after Easter Holiday : **Tuesday 14th April 2020**

After School Club phone 07821 645720 — Mon/Tues/Wed/Fri : 3.15pm to 5.30pm, Thurs : 3.15pm to 5.00pm



Lostwithiel School
Bodmin Hill
Lostwithiel
Cornwall
PL22 0AJ

www.lostwithiel.cornwall.sch.uk
Telephone: 01208 872339

**PRIDE,
PASSION,
PARTNERSHIP,
PERSEVERANCE,
PARTICIPATION.**

DATES FOR YOUR DIARY (Please check every week for new events being added)

MARCH

Friday 20th
Thurs 26th

Race for Life at school, children can wear their P.E kit to school (bring change of clothes)
2pm: Rebecca Ellis (our safeguarding governor) will be holding an information talk for parents/carers

MAY

Fri 8th
Mon 11th to Fri 15th
Wed 13th to Fri 15th
Tues 19th to Fri 22nd
Fri 22nd

Year 2 SATS during May
Bank Holiday—school closed
Year 6 SATS
Year 5 visit to Bude
Year 6 visit to London
2pm Parent Steering Group meeting at school, all parents/carers welcome

2019/2020 Academic Year—Advance notice of these important dates

Inset/training week school closed to children 1st June 2020 to 5th June 2020 (this is the week following May half term)
Year 6 SATS—11th May to 14th May 2020
Year 2 SATS—during May 2020
Year 1 Phonics screening—8th June to 12th June 2020

GARDEN CLUB REQUEST

Garden club are getting ready for the growing season and asked for donations of 'plant now' seeds, for any type of plant. All donations gratefully received at the school office. Thank you



APPLE CLASS TREE PLANTING

Apple Class were out and about in Lostwithiel last week planting trees at the Community Orchard. What a fabulous morning! Such great teamwork and perseverance. Well done Apple Tree Class!



GYM GOLD

We are all very proud of Orlaith in Beech Class. She competed last week in the Cornwall County Level 7 floor and vault competition with her gym squad. She won gold on vault, placed 5th overall in her age group and helped her team take gold overall too !

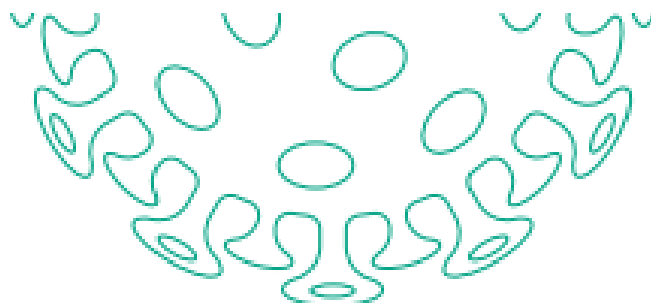
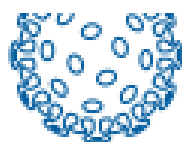


LOST PROPERTY—Our lost property box is full of unnamed school jumpers, cardigans, sweatshirts, coats and various sports items and we'd like them to be returned to their owners. If you have been missing items please come and see if any belong to your child. Lost property is located outside the school office in the main school building and is available to look through at drop off and pick up times.

Any items remaining at the end of this term will be donated to a charity for re-use or re-sale. Thankyou.



Public Health
England



Advice on the coronavirus for places of education

How serious is the coronavirus?

- it can cause flu-like symptoms, including fever, cough & difficulty breathing
- the infection is not serious for most people, including children
- there is currently no vaccine
- most people get better with enough rest, water to drink and medicine for pain

How likely are you to catch the virus?

- you can only catch it if you have been close to a person who has the virus
- the chance of being in contact with the virus is currently low in the UK
- if you have travelled to areas where many people are infected, your chance of catching the virus is higher, i.e. China and any affected areas

How can you stop coronaviruses spreading?

If you need to cough or sneeze



Catch it
with a tissue



Bin it



Kill it
by washing
your hands with
soap & water or
hand sanitiser

You should wash hands with soap & water or hand sanitiser



After breaks
& sport
activities



Before
cooking
& eating



On arrival at
any childcare
or educational
setting



After using
the toilet



Before
leaving
home



Try not to touch your
eyes, nose, and mouth
with unwashed hands



Do not share items that come
into contact with your mouth
such as cups & bottles



If unwell do not share
items such as bedding,
dishes, pencils & towels



Stop germs spreading with our e-Bug resources on hand and respiratory hygiene lesson plans for KS1, 2 and 3: campaignresources.phe.gov.uk/schools

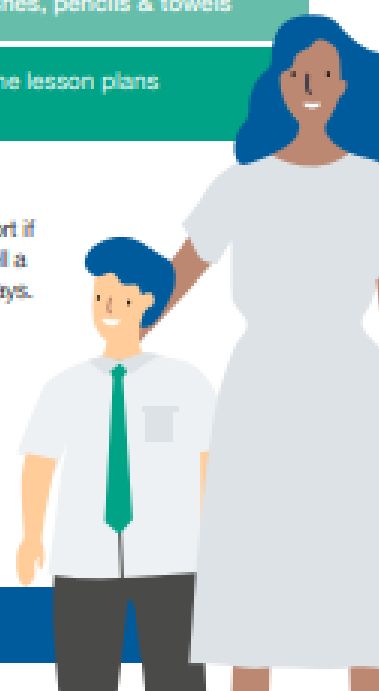
What should you do if you feel unwell?

Keep away from others and stay at home to stop the infection spreading. Avoid public transport if you think you have symptoms of coronavirus. If you become unwell at a place of education, tell a member of staff and let them know if you have travelled to any other countries in the last 14 days.

If your staff member or parent thinks you have symptoms of coronavirus, they should call **NHS 111** for advice. Follow the UK Government advice for childcare or educational settings gov.uk/government/publications/guidance-to-educational-settings-about-covid-19. Parents can visit NHS.UK to find out more information. Teachers and support staff should follow the UK Government advice.

Staff, students and pupils who have returned from Wuhan and Hubei Province in China should self isolate, and NOT attend education or work for 14 days. See NHS.UK for advice on coronavirus.

If there is an emergency, call 999 immediately





British Science Week 2020
'Science of a Pasty'
Saturday 14 March 1.00-3.00pm



Join the National buzz to celebrate STEM during British Science Week!

Visit Wheal Martyn and see science in action.

Find out more about the science connected to the delicious Cornish Pasty!

Our FREE Family Science Day is on Saturday 14 March, 1.00 to 3.00pm.

Take part in the hands-on science investigations, take an engineering challenge to design and build a structure, be creative and unleash your artistic streak and be inspired to think like a scientist. All our facilitators are aspiring young scientists and engineers from the St Austell Home Ed Group, keen to show the fun in STEM!



All activities are FREE. Bring the whole family along to enjoy the day!

For full entry to the museum, normal museum entry fees or a Cornwall Residents' Pass is required. Why not take advantage of the discounted annual Cornwall Residents' Pass, still available until 31st March - Adult £7.50; Child £5.00.

For all enquiries, contact the Education Officer on gmartin@wheal-martyn.com
Call 01726 850362 or visit www.wheal-martyn.com





Lostwithiel School
Bodmin Hill
Lostwithiel
Cornwall
PL22 0AJ

www.lostwithiel.cornwall.sch.uk
Telephone: 01208 872339

**PRIDE,
PASSION,
PARTNERSHIP,
PERSEVERANCE,
PARTICIPATION.**

ALLERGY INFORMATION: If your child has an allergy or intolerance please ask a member of the catering team for information. If your child has a school lunch and has a food allergy or intolerance you will be asked to complete a form to ensure we have the necessary information to cater for your child.

Cornwall Menu
Autumn 2019

caterlink
feeding the imagination

		Monday	Tuesday	Wednesday	Thursday	Friday
Week 1 28 th October 18 th November 9 th December 13 th January 3 rd February 2 nd March 23 rd March	Main	Chicken Pizza with Pasta	Sausage Plait with Mash Potato and Gravy	Roast Chicken and Stuffing with Roast Potatoes and Gravy	Spaghetti Bolognese with Garlic Bread	MSC Fish in Batter with Chips
	Vegetarian	Cheese and Tomato Pizza with Pasta	Creamy Vegetable Pie with Mash Potato and Gravy	Quorn Fillet and Stuffing with Roast Potatoes and Gravy	Vegetarian Spaghetti Bolognese with Garlic Bread	Cheese Quiche with Chips
		Peas Sweetcorn	Cauliflower Broccoli	Savoy Cabbage Carrots	Peas Sweetcorn	Baked Beans Peas
	Dessert	Orange Drizzle Cake	Yoghurt and Fruit	Apple Crumble with Custard	Jelly with Fruit	Oaty Cookie
Week 2 4 th November 25 th November 16 th December 20 th January 10 th February 9 th March	Main	Sausage and Mash Potato with Gravy	Mild Chicken Curry with Fluffy Rice	Roast Gammon with Roast Potatoes and Gravy	Macaroni Bolognese with Tomato Bread	MSC Fishfingers or Salmon Fishfingers with Chips
	Vegetarian	Quorn Sausage and Mash Potato with Gravy	Mild Vegetable Curry with Fluffy Rice	Vegetarian Wellington with Roast Potatoes and Gravy	Macaroni Cheese with Garlic Bread	Cheese Whirl with Chips
		Carrots Green Beans	Sweetcorn Broccoli	Cauliflower Carrots	Carrot and Cucumber Sticks Broccoli	Baked Beans Peas
	Dessert	Iced Sponge	Eves Pudding with Custard	Apple Flapjack	Jelly with Fruit	Chocolate Shortbread
Week 3 11 th November 2 nd December 6 th January 27 th January 24 th February 16 th March	Main	Beef Burger in a Bun with Pasta	Cottage Pie with Gravy	Roast Turkey and Stuffing with Roast Potatoes and Gravy	Chicken Lasagne with Garlic Bread	MSC Fishfingers with Chips
	Vegetarian	Quorn Burger in a Bun with Pasta	Shepherdess Pie with Gravy	Quorn Fillet and Stuffing with Roast Potatoes and Gravy	Vegetarian Lasagne with Garlic Bread	Five Bean Chilli with Chips
		Sweetcorn Baked Beans	Broccoli Green Beans	Carrots Cabbage	Green Beans Sweetcorn	Baked Beans Peas
	Dessert	Berry and Apple Cobbler with Custard	Carrot Cake	Apple, Cheese and Biscuits	Jelly and Fruit	Vanilla Shortbread



Available Daily
Freshly cooked jacket potatoes with a choice of fillings (where advertised)
Bread freshly baked on site daily
Daily salad selection

MAIN COURSE ALSO CHOICE OF A JACKET POTATO, THE FILLING IS CHEESE AND BEANS DAILY



Lostwithiel School
Bodmin Hill
Lostwithiel
Cornwall
PL22 0AJ

www.lostwithiel.cornwall.sch.uk
Telephone: 01208 872339

**PRIDE,
PASSION,
PARTNERSHIP,
PERSEVERANCE,
PARTICIPATION.**

LOSTWITHIEL SCHOOL TERM DATES AND INSET DAY INFORMATION

CHANGE OF DATE FOR MAY BANK HOLIDAY 2020

The May Bank Holiday 2020 date has been changed

FROM: Monday 4th May TO: Friday 8th May

PLEASE NOTE THAT SCHOOL WILL BE OPEN AS USUAL ON MONDAY 4th MAY AND CLOSED TO PUPILS ON FRIDAY 8th MAY. THIS CHANGE HAS BEEN MADE NATIONALLY TO MARK THE ANNIVERSARY OF VE DAY.

IMPORTANT NEWS REGARDING LOSTWITHIEL SCHOOL INSET DAYS

The Cornwall Council term dates and holidays for school year 2019/2020

SCHOOL YEAR 2019/2020

Lostwithiel School will be taking their staff training (inset) days in a week block again next year, during the 2019/2020 school year, following the May half term week. Therefore school will be closed to pupils from Monday 25th May to Friday 29th May 2020 (half term) and also the week following that from Monday 1st June to Friday 5th June 2020 (inset days). Pupils return to school on Monday 8th June 2020.

Cornwall Council

2019/20 school term dates for community and voluntary-controlled schools



September 2019						
Mon		2	9	16	23	30
Tue		3	10	17	24	
Wed		4	11	18	25	
Thurs		5	12	19	26	
Fri		6	13	20	27	
Sat		7	14	21	28	
Sun	1	8	15	22	29	

October 2019						
Mon		7	14	21	28	
Tue	1	8	15	22	29	
Wed	2	9	16	23	30	
Thurs	3	10	17	24	31	
Fri	4	11	18	25		
Sat	5	12	19	26		
Sun	6	13	20	27		

November 2019						
Mon		4	11	18	25	
Tue		5	12	19	26	
Wed		6	13	20	27	
Thurs		7	14	21	28	
Fri	1	8	15	22	29	
Sat	2	9	16	23	30	
Sun	3	10	17	24		

School holidays

Bank holidays

Christmas Day	25 December 2019
Boxing Day	26 December 2019
New Year's Day	01 January 2020
Good Friday	10 April 2020
Easter Monday	13 April 2020
Early May Holiday	08 May 2020
Spring Bank Holiday	25 May 2020
Summer Bank Holiday	31 August 2020

AUTUMN TERM 2019 (73 days)

04 September - 20 December
(Half term 21 - 25 October)

SPRING TERM 2020 (55 days)

06 January - 27 March
(Half term 17 - 21 February)

SUMMER TERM 2020 (67 days)

14 April - 23 July
(Half term 25 May - 29 May)

*Lostwithiel School
inset days 2020*

195 days are included on the school calendar. Schools will be open to pupils for 190 days. The 5 additional days are allotted for In-Service Training.

December 2019						
Mon		2	9	16	23	30
Tue		3	10	17	24	31
Wed		4	11	18	25	
Thurs		5	12	19	26	
Fri		6	13	20	27	
Sat		7	14	21	28	
Sun	1	8	15	22	29	

January 2020						
Mon		6	13	20	27	
Tue		7	14	21	28	
Wed	1	8	15	22	29	
Thurs	2	9	16	23	30	
Fri	3	10	17	24	31	
Sat	4	11	18	25		
Sun	5	12	19	26		

February 2020						
Mon		3	10	17	24	
Tue		4	11	18	25	
Wed		5	12	19	26	
Thurs		6	13	20	27	
Fri		7	14	21	28	
Sat	1	8	15	22	29	
Sun	2	9	16	23		

March 2020						
Mon		2	9	16	23	30
Tue		3	10	17	24	31
Wed		4	11	18	25	
Thurs		5	12	19	26	
Fri		6	13	20	27	
Sat		7	14	21	28	
Sun	1	8	15	22	29	

April 2020						
Mon		6	13	20	27	
Tue		7	14	21	28	
Wed	1	8	15	22	29	
Thurs	2	9	16	23	30	
Fri	3	10	17	24		
Sat	4	11	18	25		
Sun	5	12	19	26		

May 2020						
Mon		4	11	18	25	
Tue		5	12	19	26	
Wed		6	13	20	27	
Thurs		7	14	21	28	
Fri	1	8	15	22	29	
Sat	2	9	16	23	30	
Sun	3	10	17	24	31	

June 2020						
Mon	1	8	15	22	29	
Tue	2	9	16	23	30	
Wed	3	10	17	24		
Thurs	4	11	18	25		
Fri	5	12	19	26		
Sat	6	13	20	27		
Sun	7	14	21	28		

July 2020						
Mon		6	13	20	27	
Tue		7	14	21	28	
Wed	1	8	15	22	29	
Thurs	2	9	16	23	30	
Fri	3	10	17	24	31	
Sat	4	11	18	25		
Sun	5	12	19	26		

August 2020						
Mon		3	10	17	24	31
Tue		4	11	18	25	
Wed		5	12	19	26	
Thurs		6	13	20	27	
Fri		7	14	21	28	
Sat	1	8	15	22	29	
Sun	2	9	16	23	30	